

**SPECIFICATION**

- Light Source LED Module (Mounted)
- Body White(WCL), Matt black(MCL), Silver(SCL)
- Light Distribution N=Narrow, M=Medium
- Vertical aiming angle Upper10°, Lower90°
- Horizontal aiming angle 360°
- Fixture Input Voltage 36, 8V
- Fixture Input Current 1.2A (MAX)
- Dedicated Driver Constant current ( 50/60Hz shared)
- Weight 1.1kg
- Attached Safety Wire
- tool for tilt lock is equipped

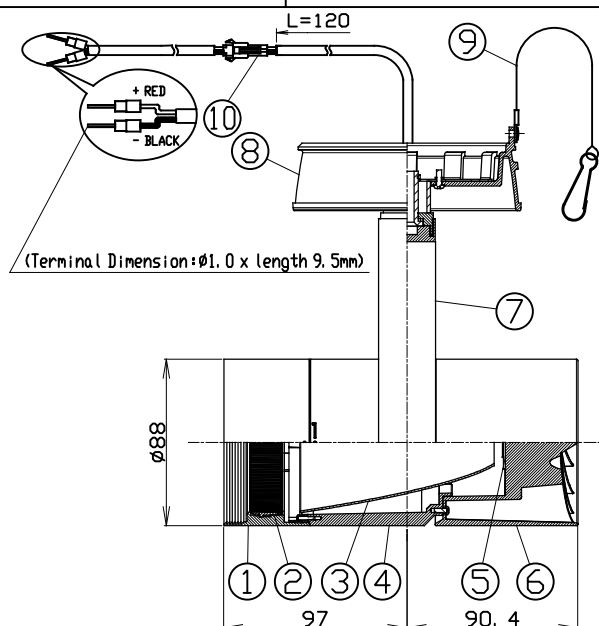
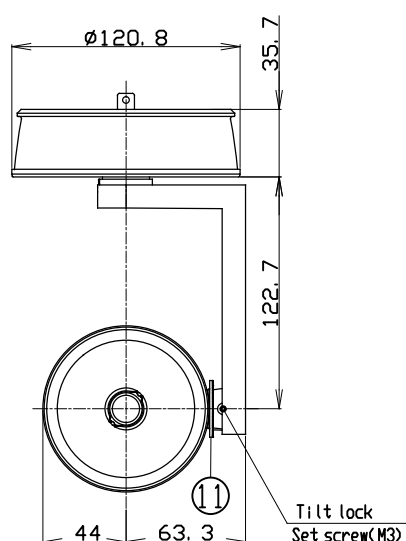
**PRODUCT CODE**

MMP-130D/1H/WCL/N・M/40B27/DL/3  
 MMP-130D/1H/WCL/N・M/40B30/DL/3  
 MMP-130D/1H/WCL/N・M/40B35/DL/3  
 MMP-130D/1H/WCL/N・M/40B40/DL/3  
 MMP-130D/1H/MCL/N・M/40B27/DL/3  
 MMP-130D/1H/MCL/N・M/40B30/DL/3  
 MMP-130D/1H/MCL/N・M/40B35/DL/3  
 MMP-130D/1H/MCL/N・M/40B40/DL/3  
 MMP-130D/1H/SCL/N・M/40B27/DL/3  
 MMP-130D/1H/SCL/N・M/40B30/DL/3  
 MMP-130D/1H/SCL/N・M/40B35/DL/3  
 MMP-130D/1H/SCL/N・M/40B40/DL/3

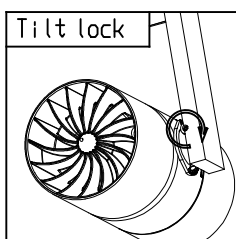
**OPTION**

Full Spread Lens Filter MLA-130/SF01  
 Semi Spread Lens Filter MLA-130/SS01  
 Full Diffuser Lens Filter MLA-130/DF01  
 Semi Diffuser Lens Filter MLA-130/DS02  
 Edge Control Lens Filters MLA-130/EC02  
 Sharpener Lens (Narrow only) MLA-130/SH01

(mm)



PARTS	MATERIAL	REMARK
1 Hood	ADC	Acrylic Baking Finish
2 Option Holder	ADC	Acrylic Baking Finish
3 Reflector	Aluminum	
4 Body	ADC	Acrylic Baking Finish
5 LED Module		
6 Socket Holder	ADC	Acrylic Baking Finish
7 Arm	ADC	Acrylic Baking Finish
8 Cone	ADC	Acrylic Baking Finish
9 Safety Wire	Stainless Steel	
10 Safety Connector	Resin	
11 Tilt Protractor	Resin	



**ATTENTION**

- Emission color and brightness would be different even within the same model.
- Do not use a radio or TV near the fixtures. The unit may generate noise in the radio or TV.
- Danger! Do not remodel fixtures.
- Please use constant current driver.
- Connect input-side power wire to the dedicated driver directly.
- Use within 0℃~35℃ ambient temperature range.
- Keep distance of the fixtures and objects 0.3m or more.
- Connect a safety wire to the fixture and mounting frame directly.
- Please do not move the fixture body under the situation the tilt lock works.
- Please do not unfasten the set screw for tilt lock too much. Otherwise, it may be dropped and lost.
- Please do not remove safety connector
- Please do not plug in the wrong electrode to the applicable driver.
- It may cause shortening of LED lifetime or the damage to the LED component.
- This equipment is a ceiling installation exclusive equipment. It can not be mounted on an inclined ceiling or wall.

- Please use the "class2" driver. In that case, grounding is not required.