

**SPECIFICATION**

- Light Source LED Module (Mounted)
- Body White(WC\*), Matte black(MC\*), Silver(SC\*)
- Frame White(W), Matt black(M)
- Light Distribution Narrow(N), Medium(M)
- Vertical aiming angle Upper10°, Lower90°
- Horizontal aiming angle 360°
- Dimming method 0-10V
- Input Voltage 220V±6%, 240V±6% (Dedicated driver input voltage)
- Input current 0.237A (Dedicated driver input voltage, 220V input)
- Power Consumption 0.217A (Dedicated driver input voltage, 240V input)
- 49.0W (Included dedicated driver, 200V input)
- 49.2W (Included dedicated driver, 242V input)
- \*The power consumption is measured based on the measuring method, JIS C 8105-3.
- Dedicated Driver Constant current (50/60Hz shared)
- Fixture Input voltage 36.8V
- Fixture Input current 1.2A
- Dimming signal input current 2mA
- Weight 1.4kg (Included dedicated driver)
- Safety Wire is attached
- tool for tilt lock is equipped

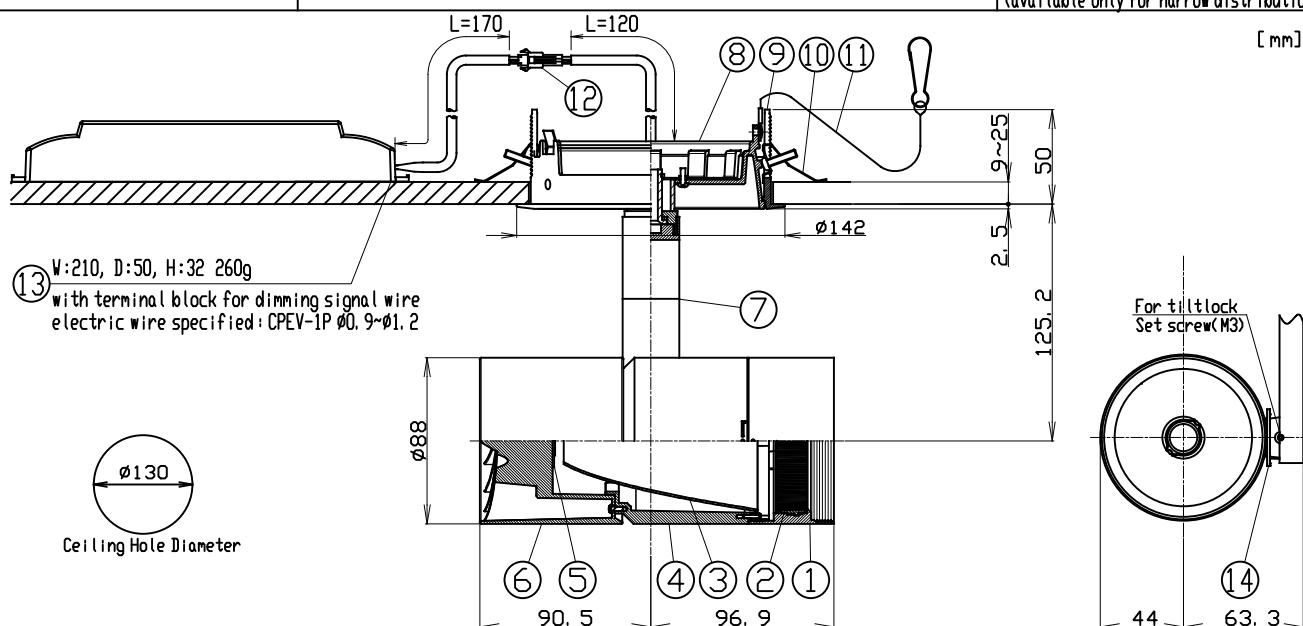
**PRODUCT CODE**

- MMP-130D/1H/WCW·N·M/40B27/Z2/3
- MMP-130D/1H/WCW·N·M/40B30/Z2/3
- MMP-130D/1H/WCW·N·M/40B35/Z2/3
- MMP-130D/1H/WCW·N·M/40B40/Z2/3
- MMP-130D/1H/MCW·N·M/40B27/Z2/3
- MMP-130D/1H/MCW·N·M/40B30/Z2/3
- MMP-130D/1H/MCW·N·M/40B35/Z2/3
- MMP-130D/1H/MCW·N·M/40B40/Z2/3
- MMP-130D/1H/SCW·SCM·N·M/40B27/Z2/3
- MMP-130D/1H/SCW·SCM·N·M/40B30/Z2/3
- MMP-130D/1H/SCW·SCM·N·M/40B35/Z2/3
- MMP-130D/1H/SCW·SCM·N·M/40B40/Z2/3

**OPTION**

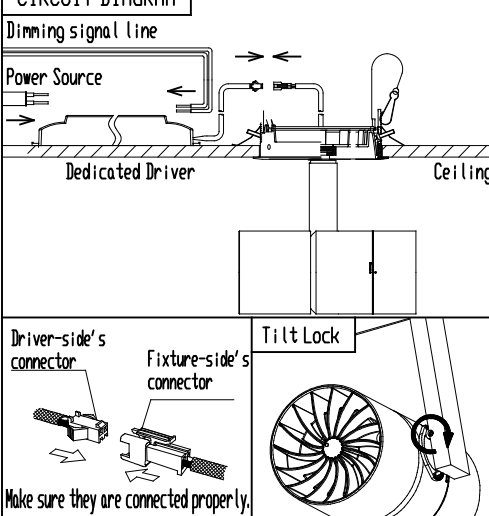
- Full Diffuser Lens Filter MLA-130/DF01
- Semi Diffuser Lens Filter MLA-130/DS02
- Full Spread Lens Filter MLA-130/SF01
- Semi Spread Lens Filter MLA-130/SS01
- Edge Control Lens Filters MLA-130/EC02
- Sharpener Lens MLA-130/SH01
- (available only for narrow distribution)

[mm]



PARTS	MATERIAL	REMARK
1 Hood	ADC	Acrylic Baking Finish
2 Option Holder	ADC	Acrylic Baking Finish
3 Reflector	Aluminum	
4 Body	ADC	Acrylic Baking Finish
5 LED Module		
6 Socket Holder	ADC	Acrylic Baking Finish
7 Arm	ADC	Acrylic Baking Finish
8 Cone	ADC	Acrylic Baking Finish
9 Mounting Frame	ADC	Acrylic Baking Finish
10 Unit Mounting Spring	Stainless Steel	
11 Safety Wire		
12 Safety Connector	Resin	
13 Dedicated Driver		0-10V control dimming system
14 Tilt Protractor	Resin	

**CIRCUIT DIAGRAM**



**ATTENTION**

- Emission color and brightness would be different even within the same model.
- Do not use a radio or TV near the fixtures. The unit may generate noise in the radio or TV.
- Danger! Do not remodel fixtures.
- Use the dedicated driver only.
- There is no sending terminal block on the dedicated driver (primary side).
- Connect input-side power wire to the dedicated driver directly.
- Calculate the capacity in accordance with JIS C8155 standard.
- Use 0-10V control dimming system (SR-2830AS-1-10V (Sold separately)) only
- The height of inside the ceiling have to be 100mm or more to install the driver there.
- Keep distance of the fixtures and objects 0.3m or more.
- Use within 0°C~35°C ambient temperature range.
- Please do not move the fixture body under the situation the pan/tilt lock works.

- Please do not unfasten the set crew for tilt lock too much. Otherwise, it may be dropped and lost.
- Be sure to connect a safety wire to the fixture and mounting frame.
- The fixture is ceiling mounting exclusive use. Do not mount inclined ceilings or walls.
- Do not cover the fixture with a heat insulator etc.