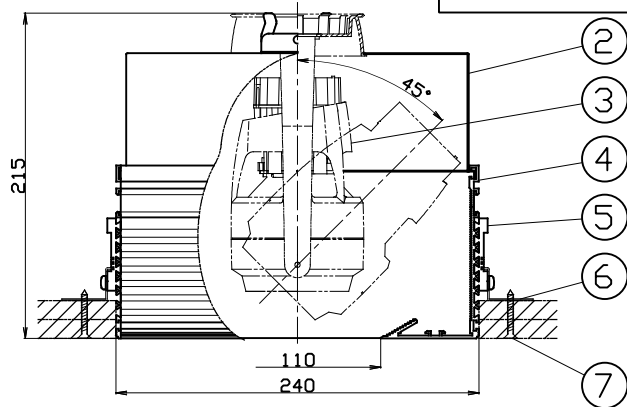
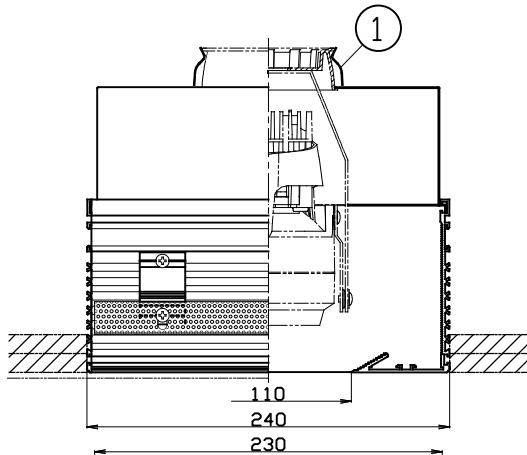
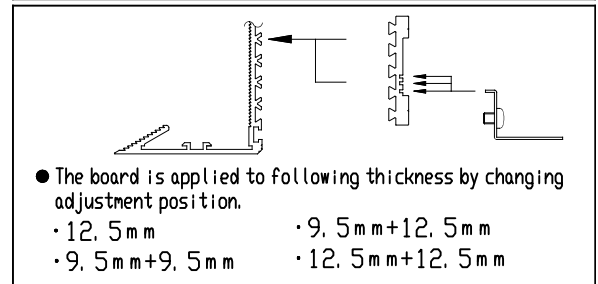
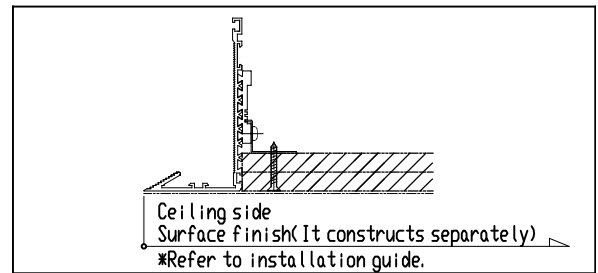
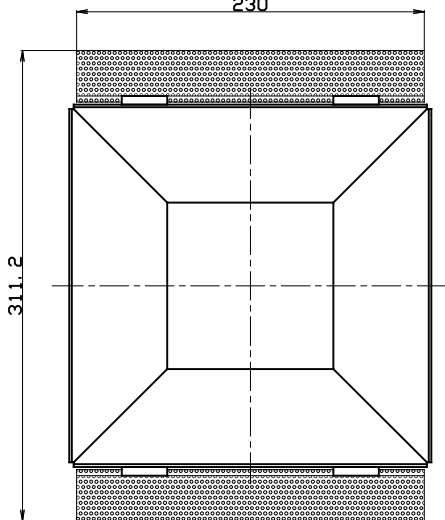


Specification  
 ● Frame Inside black  
 ● Weight 2.3Kg

Product Code  
 SX-LF101  
 Fixture (Sold Separately)  
 SL-400DFC/V2/CE



Ceiling Cut Out  
 242×242



PARTS	MATERIAL	REMARK
1 Spring	Stainless	
2 Box	Steel plate	black
3 Fixture (Sold Separately)	ADC	Acrylic Baking Finish
4 Main Unit	Aluminum Extrusion	Anodic coating
5 Attachment	Aluminum Extrusion	Anodic coating
6 Bracket	Aluminum Punching	
7 Drilling tapped screw	Iron	Plating

- Attention**
- Danger: Do not remodel fixtures.
  - Do not cover the fixtures and ballast with the heat insulator etc.
  - Refer to the installation guide for the construction method.
  - Use lawn for construction. If not, it will cause some crack.
  - Make sure to use provided number of drilling tapped screws.
  - Install the drilling tapped screws as close as to the edge of box.
  - Be accurate in dimensions of ceiling cut out.
  - To install an inverter safely, please make sure your ceiling has at least 280mm or more clearance inside.

