

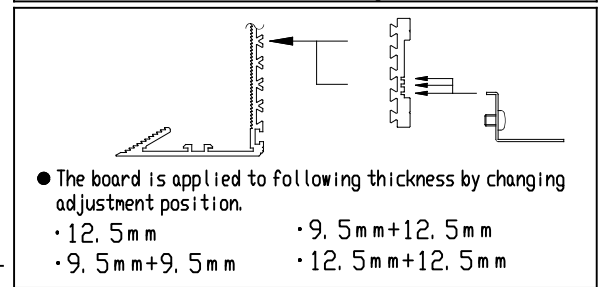
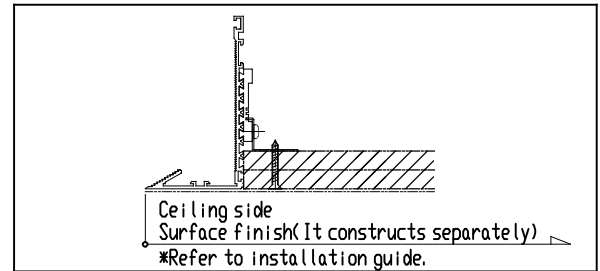
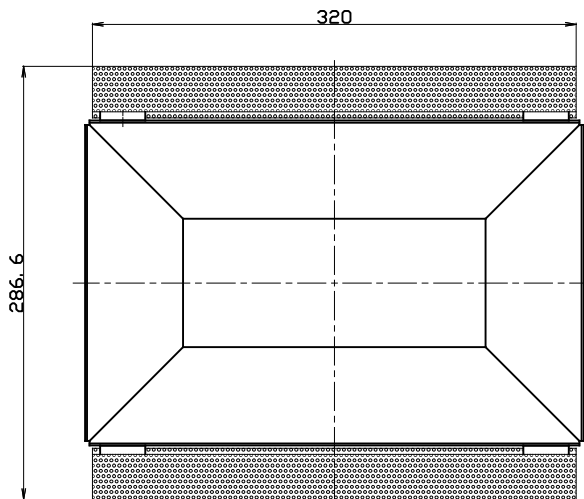
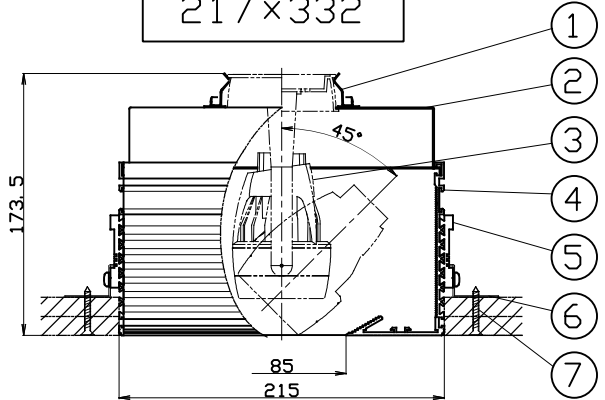
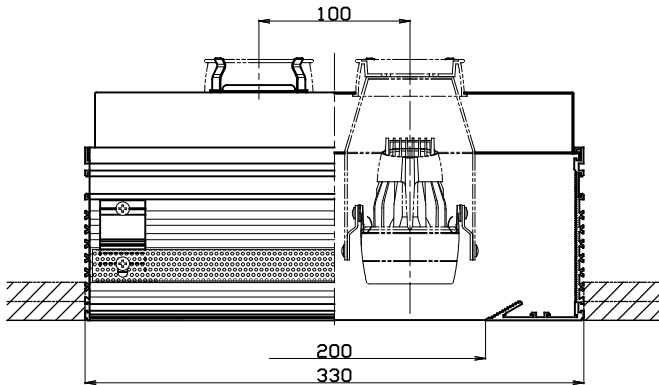
Specification

- Frame Inside black
- Weight 2.4Kg

Product Code
SX-LF082

Fixture (Sold Separately)
SL-505/80DFC/CE
SL-535/80DFC/CE

Ceiling Cut Out
217×332



| PARTS | MATERIAL | REMARK |
|-------------------------|--------------------|-----------------|
| 1 Spring | Stainless | |
| 2 Box | Steel plate | |
| 3 Fixtures | | Sold Separately |
| 4 Main Unit | Aluminum Extrusion | Anodic coating |
| 5 Attachment | Aluminum Extrusion | Anodic coating |
| 6 Bracket | Aluminum Punching | |
| 7 Drilling tapped screw | Iron | Plating |

Attention

- Danger: Do not remodel fixtures.
- Do not cover the fixtures and ballast with the heat insulator etc.
- Refer to the installation guide for the construction method.
- Use lawn for construction. If not, it will cause some crack.
- Make sure to use provided number of drilling tapped screws.
- Install the drilling tapped screws as close as to the edge of box.
- Be accurate in dimensions of ceiling cut out.
- To install an inverter safely, please make sure your ceiling has at least 270mm or more clearance inside.

