

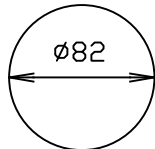
SPECIFICATION

- Light Source LED Module (Mounted)
- Light Distribution W=Wide, M=Medium
- Cone Color Black Baffle Cone(BF)
- Frame White, Matte Black
- Dedicated Driver Constant current (50/60Hz shared)
- Fixture Input Voltage 38, 6V
- Fixture Input Current 0.7A (MAX)
- Weight 380g
- Attached Safety Wire

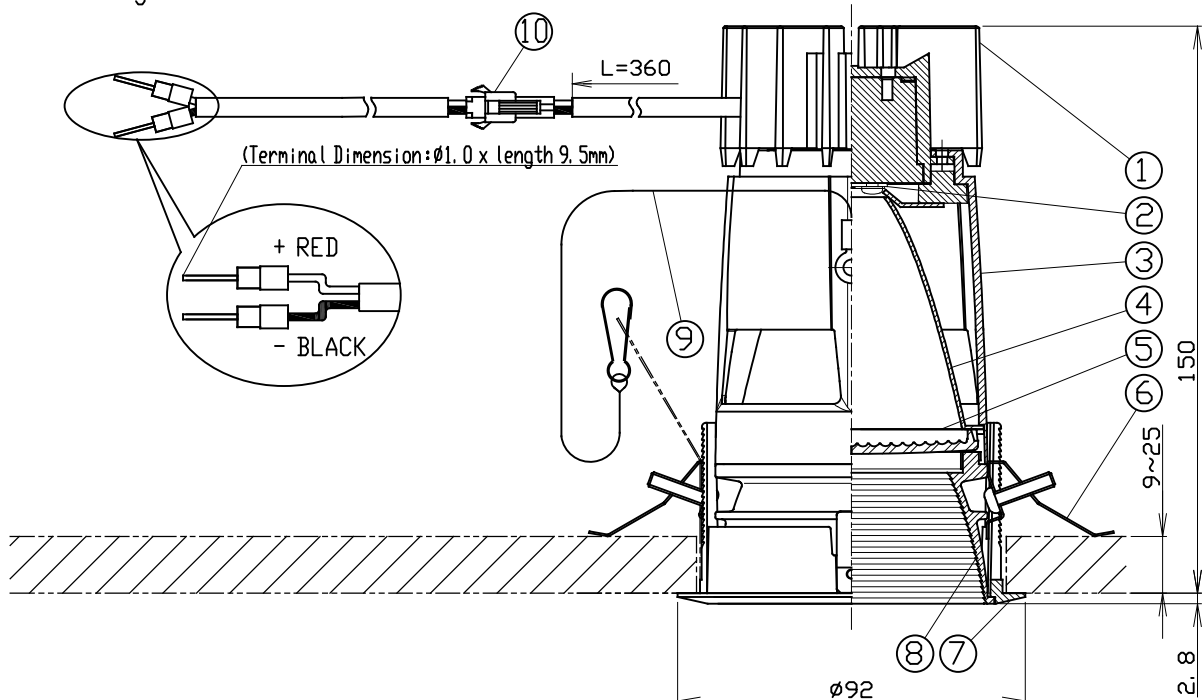
PRODUCT CODE

SX-B1351D/W/R24B/BF/W·M/CE
 SX-B1351D/W/R27B/BF/W·M/CE
 SX-B1351D/W/R30B/BF/W·M/CE
 SX-B1351D/W/R35B/BF/W·M/CE
 SX-B1351D/W/R40B/BF/W·M/CE
 SX-B1351D/M/R24B/BF/W·M/CE
 SX-B1351D/M/R27B/BF/W·M/CE
 SX-B1351D/M/R30B/BF/W·M/CE
 SX-B1351D/M/R35B/BF/W·M/CE
 SX-B1351D/M/R40B/BF/W·M/CE

[mm]



Ceiling Hole Diameter



	PARTS	MATERIAL	REMARK
1	Socket Holder	ADC	Acrylic Baking Finish
2	LED Module		
3	Body	ADC	Acrylic Baking Finish
4	Reflector	Aluminum	
5	Lens Filter	Hard Glass	Stationary type
6	Unit Mounting Spring	Stainless Steel	
7	Mounting Frame	ADC	Acrylic Baking Finish
8	Cone	ADC	Acrylic Baking Finish
9	Safety Wire	Stainless Steel	
10	Safety Connector	Resin	

ATTENTION

- Do not cover fixtures with the heat insulator etc.
- Please use constant current driver.
- Connect input-side power wire to the approved driver directly.
- Danger! Do not remodel fixtures.
- Use within 0℃~35℃ ambient temperature range
- Connect a safety wire to the fixture and mounting frame directly.
- Emission color and brightness would be different even within the same model.
- Keep distance of the fixtures and objects 0.1m or more.
- Please do not remove safety connector
- Please use the 'class2' driver. In that case, grounding is not required.