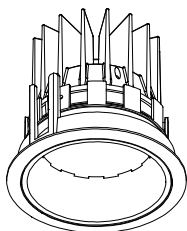


**Discontinued product**



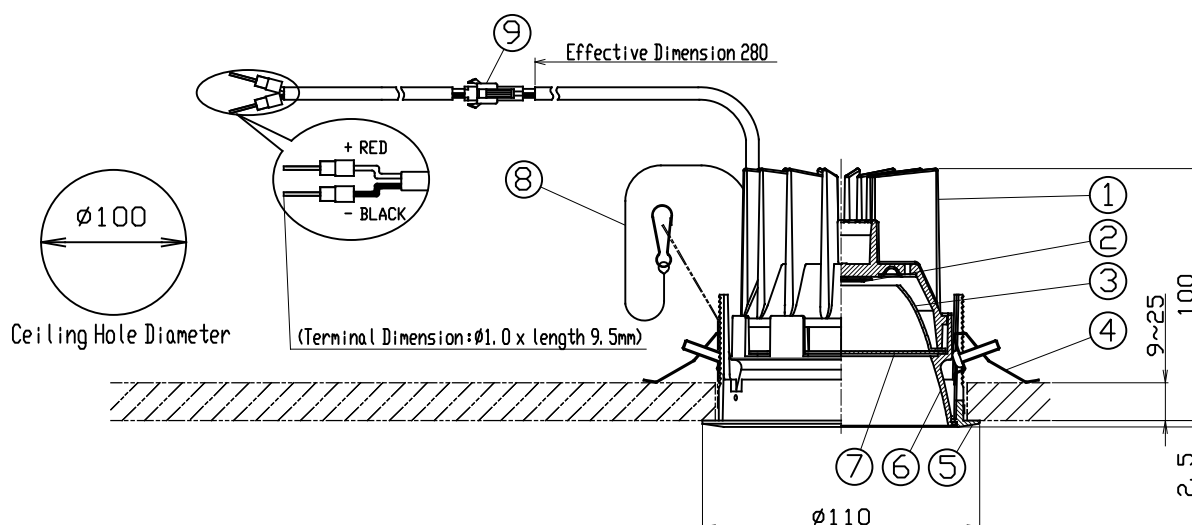
**SPECIFICATION**

- Light Source LED Module (Mounted)
- Light Distribution M=Medium, F=Flood
- Mounting Frame White(SWF), Matte Black(SMF)
- Cone Color White Cone(WC), Matte Black Cone(MC)
- Dedicated Driver Constant current ( 50/60Hz shared)
- Fixture Input Voltage 37, 8V
- Fixture Input Current 0. 9A MAX
- Weight 420g
- Attached Safety Wire

**PRODUCT CODE**

MSP-100F/WC/SWF/M・F/30B27/DL/3  
 MSP-100F/WC/SWF/M・F/30B30/DL/3  
 MSP-100F/WC/SWF/M・F/30B35/DL/3  
 MSP-100F/WC/SWF/M・F/30B40/DL/3  
 MSP-100F/MC/SWF・SMF/M・F/30B27/DL/3  
 MSP-100F/MC/SWF・SMF/M・F/30B30/DL/3  
 MSP-100F/MC/SWF・SMF/M・F/30B35/DL/3  
 MSP-100F/MC/SWF・SMF/M・F/30B40/DL/3

(mm)



	PARTS	MATERIAL	REMARK
1	Body	ADC	Acrylic Baking Finish
2	LED Module		
3	Reflector	Aluminum	
4	Unit Mounting Spring	Stainless Steel	
5	Mounting Frame	ADC	Acrylic Baking Finish
6	Cone	ADC	Acrylic Baking Finish
7	Filter	Resin	
8	Safety Wire	Stainless Steel	
9	Safety Connector	Resin	

**ATTENTION**

- Use within 0℃~35℃ ambient temperature range.
- Do not cover fixtures with the heat insulator etc.
- Keep distance of the fixtures and objects 0. 2m or more.
- Danger ! Do not remodel fixtures.
- Connect a safety wire to the fixture and mounting frame directly.
- Emission color and brightness would be different even within the same model.
- Please use constant current driver.
- Connect input-side power wire to the approved driver directly.
- Please do not remove safety connector.
- Please do not plug in the wrong electrode to the applicable driver.
- It may cause shortening of LED lifetime or the damage to the LED component.
- This equipment is a ceiling installation exclusive equipment. It can not be mounted on an inclined ceiling or wall.
- Please use the "class2" driver. In that case, grounding is not required.