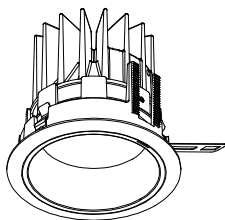


**Discontinued product**



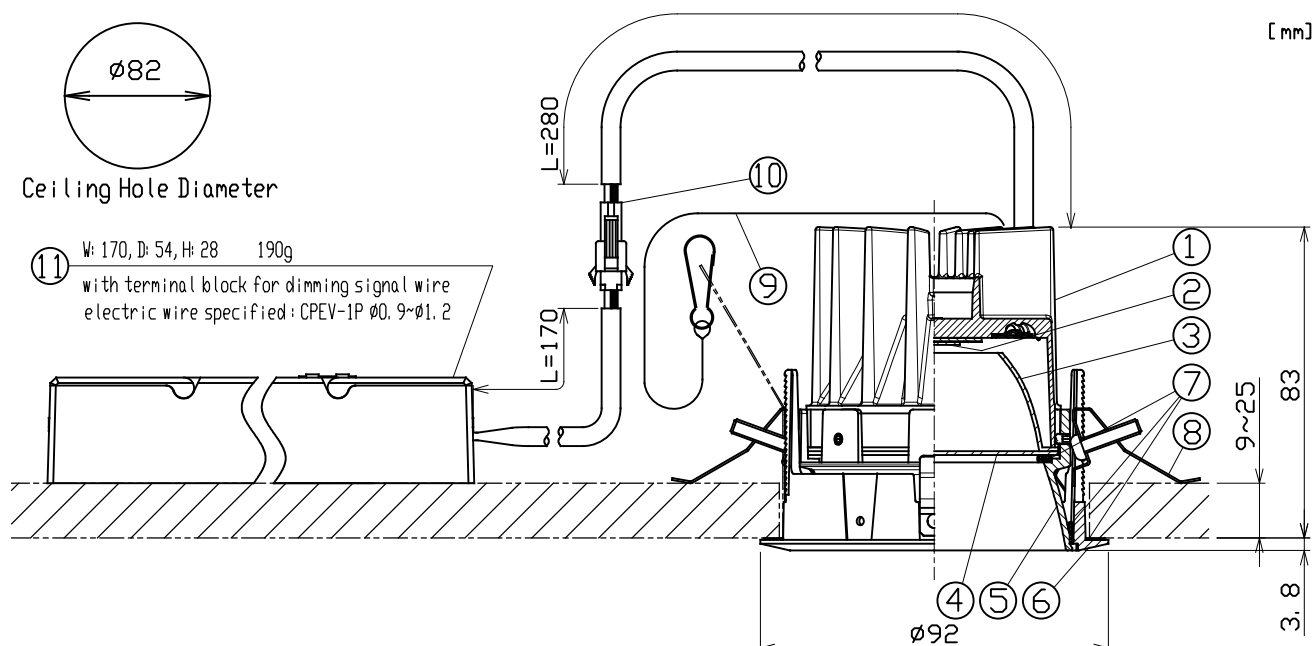
**SPECIFICATION**

- Light Source LED Module (Mounted)
- Cone White Cone(W), Matte black Cone(MC)
- Flame White(PWF), Matte black(PMF)
- Light Distribution Flood(F), Medium(M)
- Dimming method 0-10V
- Input Voltage 220V±6%, 240V±6%(Dedicated driver input voltage)
- Input Current 0.148A (Dedicated driver input voltage, 220V input)
- Power Consumption 0.136A (Dedicated driver input voltage, 240V input)
- 29.3W (Included dedicated driver, 220V input)
- 29.4W (Included dedicated driver, 240V input)
- \*The power consumption is measured based on the measuring method, JIS C 8105-3.
- Dedicated Driver Constant current (50/60Hz shared)
- Fixture Input Voltage 36.8V
- Fixture Input Current 0.7A
- Dimming signal input current 2mA
- Weight 480g (Driver weight is included)
- Safety wire included

**PRODUCT CODE**

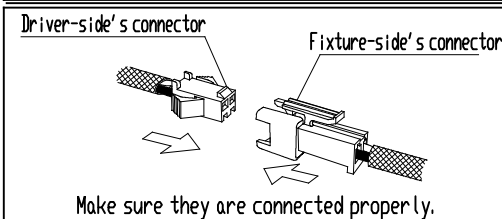
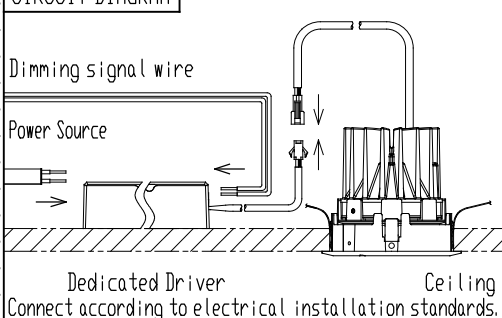
- MSP-080F/WC/PWF/M·F/20B27/Z2/3  
MSP-080F/WC/PWF/M·F/20B30/Z2/3  
MSP-080F/WC/PWF/M·F/20B35/Z2/3  
MSP-080F/WC/PWF/M·F/20B40/Z2/3
- MSP-080F/MC/PWF·PMF/M·F/20B27/Z2/3  
MSP-080F/MC/PWF·PMF/M·F/20B30/Z2/3  
MSP-080F/MC/PWF·PMF/M·F/20B35/Z2/3  
MSP-080F/MC/PWF·PMF/M·F/20B40/Z2/3

**IP45**



	PARTS	MATERIAL	REMARK
1	Body	ADC	Acrylic Baking Finish
2	LED Module		
3	Reflector	Aluminum	
4	Filter	Resin	
5	Cone	ADC	Acrylic Baking Finish
6	Mounting Frame	ADC	Acrylic Baking Finish
7	Packing	Rubber sponge	
8	Unit Mounting Spring	Stainless Steel	
9	Safety Wire	Stainless Steel	
10	Safety Connector	Resin	
11	Dedicated Driver	Resin	0-10V control dimming system

**CIRCUIT DIAGRAM**



**ATTENTION**

- Use within 0~35℃ ambient temperature range.
- Do not cover fixtures with the heat insulator etc.
- Keep distance of the fixtures and objects 0.2m or more.
- Danger! Do not remodel fixtures.
- Do not use a radio or TV near the fixtures. The unit may generate noise in the radio or TV.
- Connect a safety wire to the fixture and mounting frame directly.
- Emission color and brightness would be different even within the same model.
- Do not install fixture in directions other than directly below. Waterproof performance may change.
- Please use constant current driver.
- There is no sending terminal block on the dedicated driver (primary side).
- Connect input-side power wire to the approved driver directly.
- The height of inside the ceiling have to be 150mm or more to install the driver there.
- Use 0-10V control dimming system (SR-2830AS-1-10) only.
- Calculate the capacity in accordance with JIS C8155 standard.
- In the state that I put in a Mounting Frame, please do not turn the instrument. There are cases where protection performance changes.
- The water-resistance capability with indoor and within the ceiling is different.
- There is no water resistance capability on the ceiling side. Do not install at places where water comes in within the ceiling.
- The fixture is ceiling mounting exclusive use. Do not mount inclined ceilings or walls.
- Do not use in high-humidity areas such as saunas.
- If the irregularities of the ceiling material is large, please be flat.