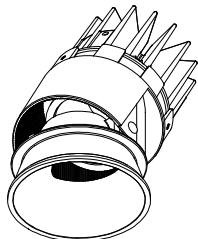


Discontinued product



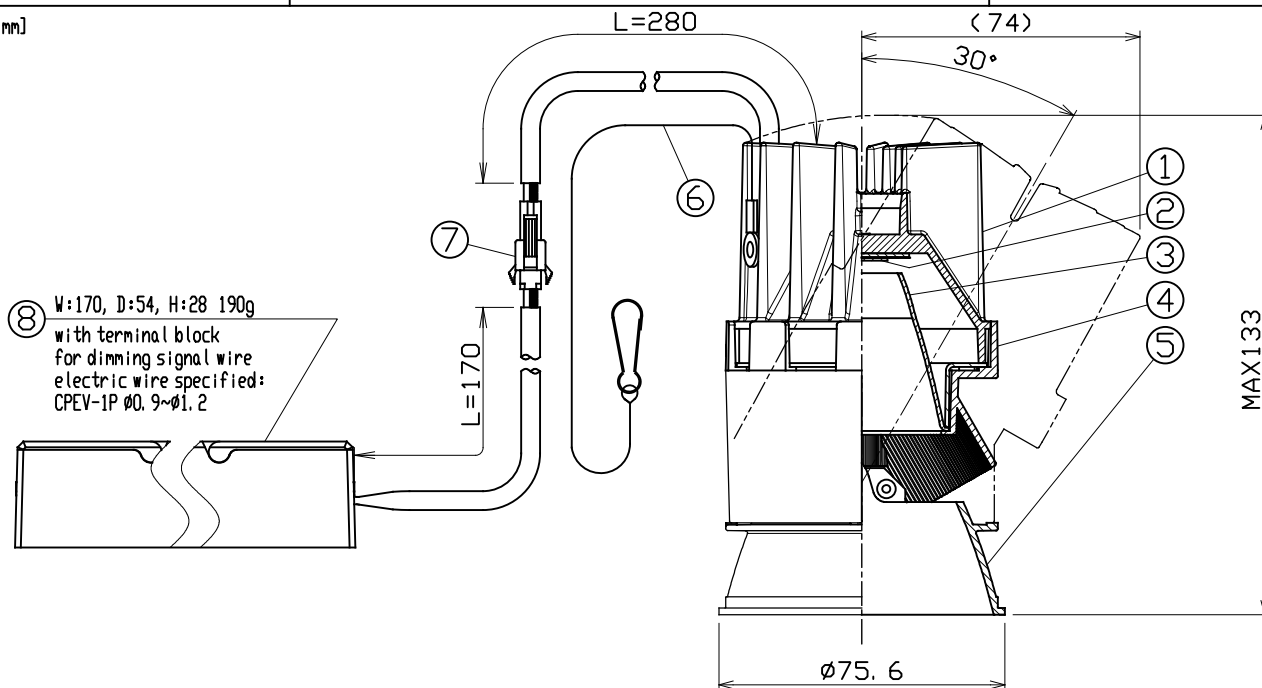
SPECIFICATION

- Light Source LED Module (Mounted)
 - Light Distribution Medium (M)
 - Cone White Cone (WC), Matte Black Cone (MC), Chrome Cone (CC)
 - Dimming method 0-10V
 - Input Voltage 220V±6%, 240V±6% (Dedicated driver input voltage)
 - Input current 0.089A (Dedicated driver input voltage, 220V input)
0.087A (Dedicated driver input voltage, 240V input)
 - Power Consumption 16.8W (Included dedicated driver, 220V input)
17.0W (Included dedicated driver, 240V input)
- *The power consumption is measured based on the measuring method, JIS C 8105-3.
- Dedicated Driver Constant current (50/60Hz shared)
 - Fixture Input voltage 19.5V
 - Fixture Input current 0.7A
 - Dimming signal input current 2mA
 - Weight 510g (Includes dedicated driver)
 - Safety Wire is attached

PRODUCT CODE

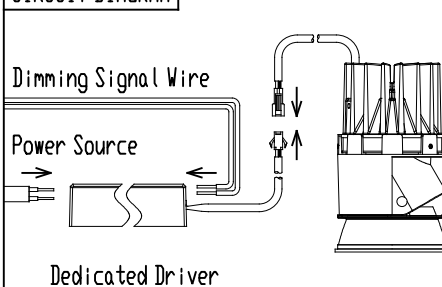
MSP-080A/WC/FLF/M/11B27/Z2/3
MSP-080A/WC/FLF/M/11B30/Z2/3
MSP-080A/WC/FLF/M/11B35/Z2/3
MSP-080A/WC/FLF/M/11B40/Z2/3
MSP-080A/MC/FLF/M/11B27/Z2/3
MSP-080A/MC/FLF/M/11B30/Z2/3
MSP-080A/MC/FLF/M/11B35/Z2/3
MSP-080A/MC/FLF/M/11B40/Z2/3
MSP-080A/CC/FLF/M/11B27/Z2/3
MSP-080A/CC/FLF/M/11B30/Z2/3
MSP-080A/CC/FLF/M/11B35/Z2/3
MSP-080A/CC/FLF/M/11B40/Z2/3

[mm]



	PARTS	MATERIAL	REMARK
1	Body	ADC	Acrylic Baking Finish
2	LED Module		
3	Reflector	Aluminum	
4	Hood	ADC	Acrylic Baking Finish
5	Cone	ADC	WC, MC:Acrylic Baking Finish CC:Plating Finish
6	Safety Wire	Stainless Steel	
7	Safety Connector	Resin	
8	Dedicated Driver		0-10V control dimming system

CIRCUIT DIAGRAM



ATTENTION

- Use within 0℃~35℃ ambient temperature range
- Do not cover fixtures with the heat insulator etc.
- Keep distance of the fixtures and objects 0.2m or more.
- Danger! Do not remodel fixtures.
- Do not use a radio or TV near the fixture. The unit may generate noise in the radio or TV.
- Connect a safety wire to the fixture and mounting frame directly.
- Because there are variations in the LEDs, emission color and brightness would be different even within the same model.
- Use 0-10V control dimming system (SR-2830AS-1-10V (Sold separately)) only
- When connecting to the electric circuit, calculate the capacity in accordance with JIS C8155 standard.
- This equipment is a ceiling installation exclusive equipment. It can not be mounted on an inclined ceiling or wall.
- Please use constant current driver.
- Connect input-side power wire to the dedicated driver directly.
- There is no sending terminal block on the dedicated driver (primary side).

