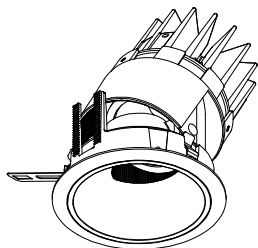


**Discontinued product**



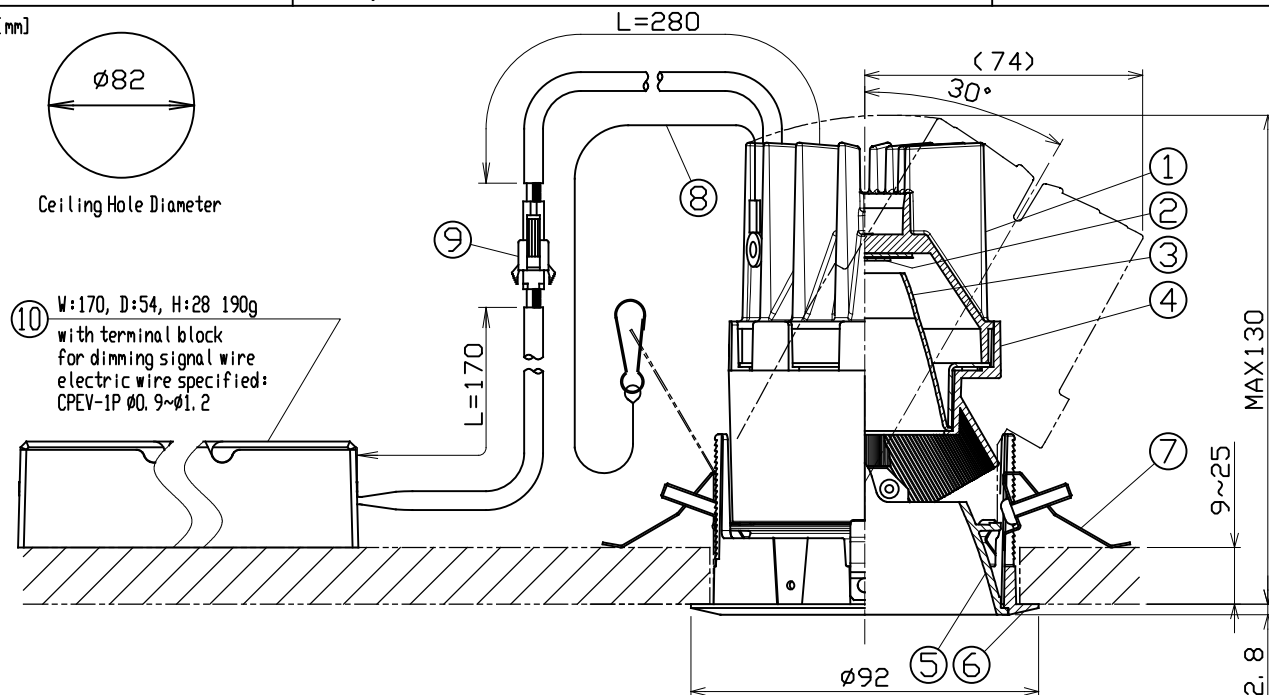
**SPECIFICATION**

- Light Source LED Module (Mounted)
- Light Distribution Medium(M)
- Mounting Frame White(SWF)・Matte Black(SMF)
- Cone White Cone(WC), Matte Black Cone(MC), Chrome Cone(CC)
- Dimming method 0-10V
- Input Voltage 220V±6%, 240V±6%(Dedicated driver input voltage)
- Input current 0.089A(Dedicated driver input voltage, 220V input)  
0.087A(Dedicated driver input voltage, 240V input)
- Power Consumption 16.8W(Included dedicated driver, 220V input)  
17.0W(Included dedicated driver, 240V input)
- \*The power consumption is measured based on the measuring method, JIS C 8105-3.
- Dedicated Driver Constant current ( 50/60Hz shared)
- Fixture Input voltage 19.5V
- Fixture Input current 0.7A
- Dimming signal input current 2mA
- Weight 580g(Includes dedicated driver)
- Safety Wire is attached

**PRODUCT CODE**

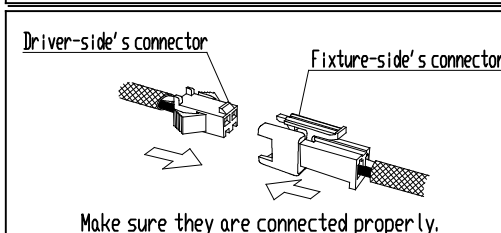
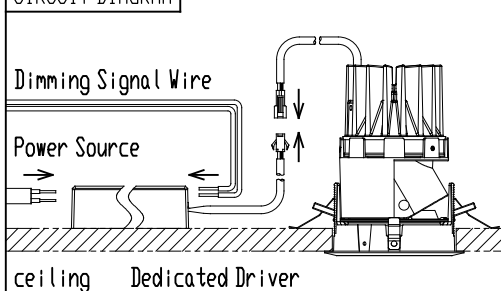
MSP-080A/WC/SWF・M/11B27/Z2/3  
MSP-080A/WC/SWF・M/11B30/Z2/3  
MSP-080A/WC/SWF・M/11B35/Z2/3  
MSP-080A/WC/SWF・M/11B40/Z2/3  
MSP-080A/MC/SWF・SMF・M/11B27/Z2/3  
MSP-080A/MC/SWF・SMF・M/11B30/Z2/3  
MSP-080A/MC/SWF・SMF・M/11B35/Z2/3  
MSP-080A/MC/SWF・SMF・M/11B40/Z2/3  
MSP-080A/CC/SWF・SMF・M/11B27/Z2/3  
MSP-080A/CC/SWF・SMF・M/11B30/Z2/3  
MSP-080A/CC/SWF・SMF・M/11B35/Z2/3  
MSP-080A/CC/SWF・SMF・M/11B40/Z2/3

[mm]



	PARTS	MATERIAL	REMARK
1	Body	ADC	Acrylic Baking Finish
2	LED Module		
3	Reflector	Aluminum	
4	Hood	ADC	Acrylic Baking Finish
5	Cone	ADC	WC, MC:Acrylic Baking Finish CC:Plating Finish
6	Mounting Frame	ADC	Acrylic Baking Finish
7	Unit Mounting Spring	Stainless Steel	
8	Safety Wire	Stainless Steel	
9	Safety Connector	Resin	
10	Dedicated Driver		0-10V control dimming system

**CIRCUIT DIAGRAM**



**ATTENTION**

- Use within 0℃~35℃ ambient temperature range
- Do not cover fixtures with the heat insulator etc.
- Keep distance of the fixtures and objects 0.2m or more.
- Danger! Do not remodel fixtures.
- Do not use a radio or TV near the fixture. The unit may generate noise in the radio or TV.
- Connect a safety wire to the fixture and mounting frame directly.
- Because there are variations in the LEDs, emission color and brightness would be different even within the same model.
- The height of inside the ceiling have to be 150mm or more to install the driver there.
- Use 0-10V control dimming system (SR-2830AS-1-10V(Sold separately)) only
- When connecting to the electric circuit, calculate the capacity in accordance with JIS C8155 standard.
- This equipment is a ceiling installation exclusive equipment. It can not be mounted on an inclined ceiling or wall.
- Please use constant current driver.
- Connect input-side power wire to the dedicated driver directly.
- There is no sending terminal block on the dedicated driver (primary side).