

**SPECIFICATION**

- Light Source LED Module (Mounted)
  - Flame White(SWF), Matte black(SMF)
  - Cone White Cone(WC), Matte black Cone(MC)
  - Light Distribution Narrow(N), Medium(M)
  - Dimming method 0-10V
  - Input Voltage 220V±6%, 240V±6%(Dedicated driver input voltage)
  - Input current 0.102A(Dedicated driver input voltage, 220V input)  
0.095A(Dedicated driver input voltage, 240V input)
  - Power Consumption 20.6W(Included dedicated driver, 220V input)  
20.7W(Included dedicated driver, 240V input)
- \*The power consumption is measured based on the measuring method, JIS C 8105-3.
- Dedicated Driver Constant current ( 50/60Hz shared)
  - Fixture Input voltage 37.1V
  - Fixture Input current 0.50A
  - Dimming signal input current 2mA
  - Weight 650g(Includes dedicated driver)
  - Safety Wire is attached
  - tool for tilt lock is equipped

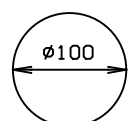
**IP65**

**PRODUCT CODE**

MOP-080A/WC/MWF/N・M/10B27/Z2/3  
MOP-080A/WC/MWF/N・M/10B30/Z2/3  
MOP-080A/WC/MWF/N・M/10B35/Z2/3  
MOP-080A/WC/MWF/N・M/10B40/Z2/3  
MOP-080A/MC/MWF・MMF/N・M/10B27/Z2/3  
MOP-080A/MC/MWF・MMF/N・M/10B30/Z2/3  
MOP-080A/MC/MWF・MMF/N・M/10B35/Z2/3  
MOP-080A/MC/MWF・MMF/N・M/10B40/Z2/3

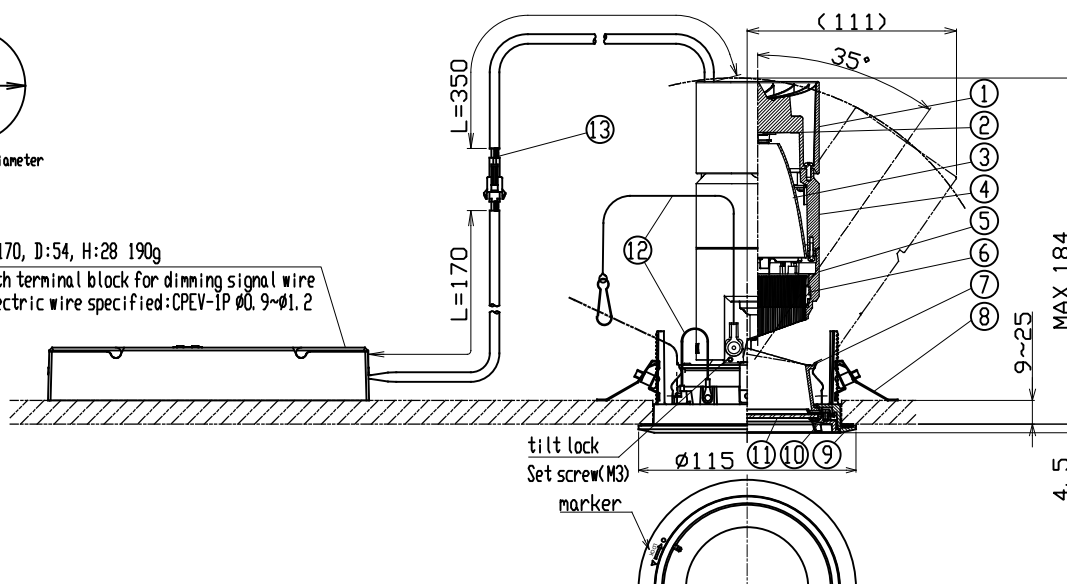
**OPTION**

Full Diffuser Lens Filter MLA-080/DF01  
Semi Diffuser Lens Filter MLA-080/DS03  
Full Spread Lens Filter MLA-080/SF01  
Semi Spread Lens Filter MLA-080/SS01  
Edge Control Lens Filter MLA-080/EC02  
Sharpener Lens MLA-080/SH01  
(available only for narrow distribution)



Ceiling Hole Diameter

- ⑭ W:170, D:54, H:28 190g  
with terminal block for dimming signal wire  
electric wire specified: CPEV-IP Ø0.9~Ø1.2

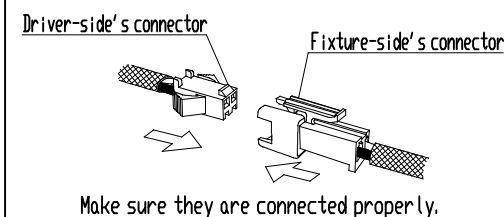
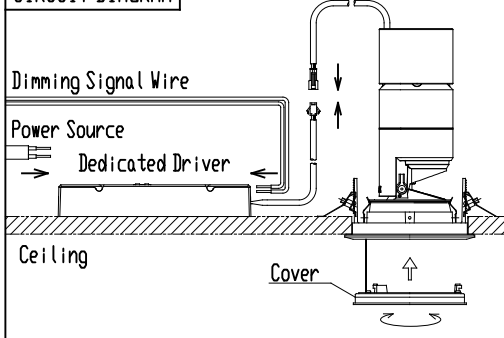


PARTS	MATERIAL	REMARK
1 Socket Holder	ADC	Acrylic Baking Finish
2 LED Module		
3 Reflector	Aluminum	
4 Body	ADC	Acrylic Baking Finish
5 Hood	ADC	Acrylic Baking Finish
6 Option Holder	ADC	Acrylic Baking Finish
7 Cone	ADC	Acrylic Baking Finish
8 Unit Mounting Spring	Stainless Steel	
9 Cover	ADC	Acrylic Baking Finish
10 Mounting Frame	ADC	Acrylic Baking Finish
11 Protected glass	Hard glass	Transparent
12 Safety Wire	Stainless Steel	
13 Safety Connector	Resin	
14 Dedicated Driver		0-10V control dimming system

**ATTENTION**

- Do not cover the fixture with a heat insulator etc.
- Please use constant current driver.
- There is no sending terminal block on the dedicated driver (primary side).
- Connect input-side power wire to the dedicated driver directly.
- Danger! Do not remodel the fixture.
- Use within 0℃~35℃ ambient temperature range.
- Be sure to connect a safety wire to the fixture and mounting frame.
- Emission color and brightness would be different even within the same model.
- Do not use a radio or TV near the fixture. The unit may generate noise in the radio or TV.
- Use 0-10V control dimming system (SR-2830AS-1-10V(Sold separately)) only.
- When connecting to the electric circuit, calculate the capacity in accordance with JIS C8155 standard.
- Keep distance of the fixture and objects 0.1m or more.
- Please do not move the fixture body under the situation the pan/tilt lock works.
- Please do not unfasten the set screw for pan/tilt lock too much. Otherwise, it may be dropped and lost.
- If the unevenness of the ceiling material is large, make it flat.

**CIRCUIT DIAGRAM**



- Do not install in any directions other than downward.
- Do not use in high-humidity areas such as saunas.
- The water-resistance capability with indoor and within the ceiling is different.
- There is no water resistance capability inside the ceiling. Do not install at places where water comes in within the ceiling.