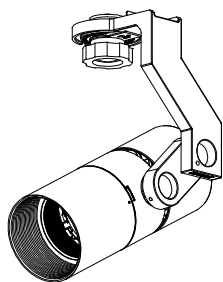


**Discontinued product**



**SPECIFICATION**

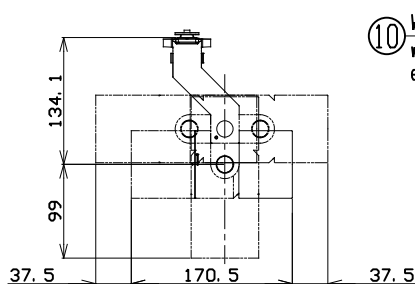
- Light Source LED Module (Mounted)
- Body Matte black(M)
- Light Distribution Narrow(N) . Medium(M)
- Vertical aiming angle Upper10° . Lower90°
- Horizontal aiming angle 254°
- Dimming method 0-10V
- Input Voltage 220V±6% . 240V±6%(Dedicated driver input voltage)
- Input current 0.200A(Dedicated driver input voltage, 220V input)  
0.185A(Dedicated driver input voltage, 240V input)
- Power Consumption 39.7W(Included dedicated driver, 220V input)  
39.9W(Included dedicated driver, 240V input)
- The power consumption is measured based on the measuring method, JIS C 8105-3.
- Dedicated Driver Constant current ( 50/60Hz shared)
- Fixture Input voltage 37.9V
- Fixture Input current 0.9A
- Dimming signal input current 2mA
- Weight 880g( Includes dedicated driver)
- tool for pan/tilt lock is equipped

**PRODUCT CODE**

MMP-100S/3H/M/LE/N-M/30B27/22/3  
MMP-100S/3H/M/LE/N-M/30B30/22/3  
MMP-100S/3H/M/LE/N-M/30B35/22/3  
MMP-100S/3H/M/LE/N-M/30B40/22/3

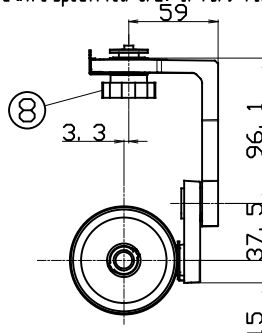
**OPTION**

Full Diffuser Lens Filter MLA-100/DF01  
Semi Diffuser Lens Filter MLA-100/DS02  
Full Spread Lens Filter MLA-100/SF01  
Semi Spread Lens Filter MLA-100/SS01  
Edge Control Lens Filters MLA-100/EC02  
Sharpeners Lens MLA-100/SH01  
(available only for narrow distribution)

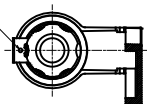


Maximum movable range

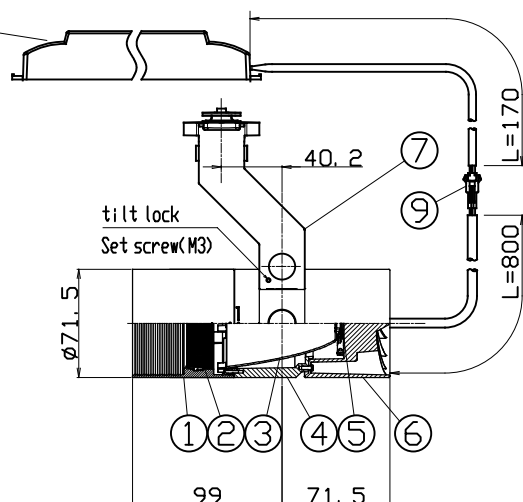
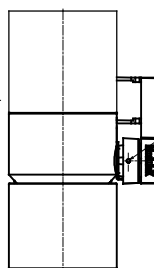
⑩ V:210, D:50, H:32 260g  
with terminal block for dimming signal wire  
electric wire specified:CPEV-IP Ø0.9~Ø1.2



pan lock  
Set screw(M3)



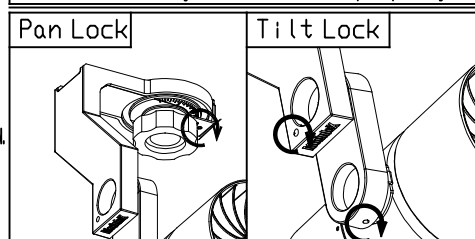
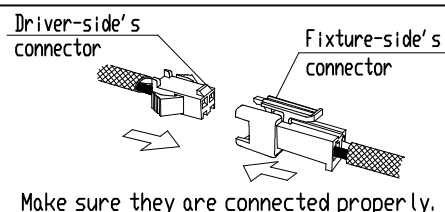
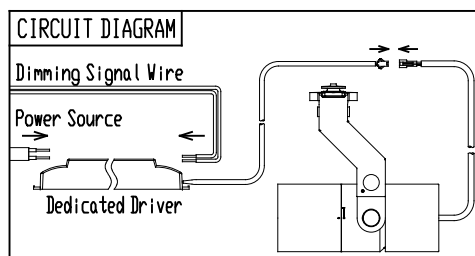
tilt lock  
Set screw(M3)



	PARTS	MATERIAL	REMARK
1	Hood	ADC	Acrylic Baking Finish
2	Option Holder	ADC	Acrylic Baking Finish
3	Reflector	Aluminum	
4	Body	ADC	Acrylic Baking Finish
5	LED Module		
6	Socket Holder	ADC	Acrylic Baking Finish
7	Arm	ADC	Acrylic Baking Finish
8	Grip Bolt	Resin	Black (M6)
9	Safety connector	Resin	
10	Dedicated Driver		0-10V control dimming system

**ATTENTION**

- Because there are variations in the LEDs, emission color and brightness would be different even within the same model.
- Do not use a radio or TV near the fixture. The unit may generate noise in the radio or TV.
- Danger! Do not remodel the fixture.
- Please use constant current driver.
- There is no sending terminal block on the dedicated driver (primary side).
- Connect input-side power wire to the dedicated driver directly.
- Please do not install to the wall or floor.
- When connecting to the electric circuit, calculate the capacity in accordance with JIS C8155 standard.
- Use within 0~35℃ ambient temperature range.
- Use 0-10V control dimming system (SR-2830AS-1-10V(Sold separately)) only.
- Keep distance of the fixture and objects 0.3m or more.
- When mounting the fixture in a ceiling cavity etc. where heat is difficult to escape, be sure to open a vent in the upper part. (Open the vent evenly over the ceiling cavity surface to an opening ratio of 5% or more with respect to the area of the ceiling cavity.)
- Please do not move the fixture body under the situation the pan/tilt lock works.



- Please do not unfasten the set screw for pan/tilt lock too much. Otherwise, it may be dropped and lost.