

SPECIFICATION

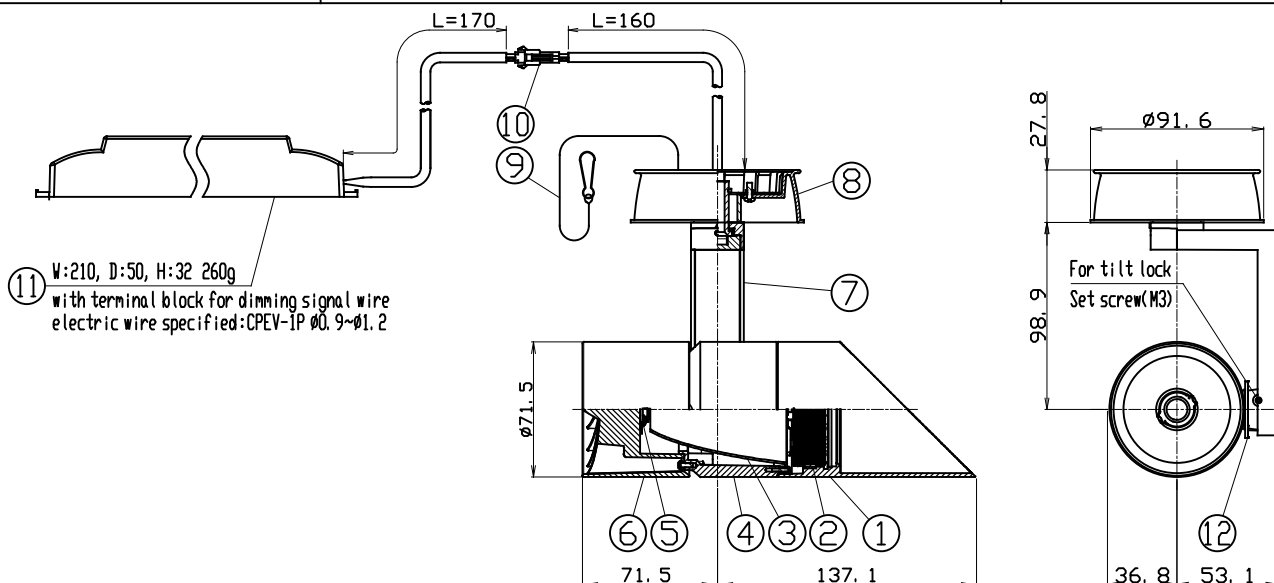
- Light Source LED Module (Mounted)
 - Body White(WC*), Matte black(MC*), Silver(SC*)
 - Light Distribution Narrow(N), Medium(M)
 - Vertical aiming angle Upper10°, Lower90°
 - Horizontal aiming angle 360°
 - Dimming method 0-10V
 - Input Voltage 220V±6%, 240V±6%(Dedicated driver input voltage)
 - Input current 0.200A(Dedicated driver input voltage, 220V input)
0.185A(Dedicated driver input voltage, 240V input)
 - Power Consumption 39.7W(Included dedicated driver, 220V input)
39.9W(Included dedicated driver, 240V input)
- *The power consumption is measured based on the measuring method, JIS C 8105-3.
- Dedicated Driver Constant current (50/60Hz shared)
 - Fixture Input voltage 37.9V
 - Fixture Input current 0.9A
 - Dimming signal input current 2mA
 - Weight 930g(Includes dedicated driver)
 - Safety Wire is attached
 - tool for tilt lock is equipped

PRODUCT CODE

MMP-100D/SH/WCL/N・M/30B27/22/3
MMP-100D/SH/WCL/N・M/30B30/22/3
MMP-100D/SH/WCL/N・M/30B35/22/3
MMP-100D/SH/WCL/N・M/30B40/22/3
MMP-100D/SH/MCL/N・M/30B27/22/3
MMP-100D/SH/MCL/N・M/30B30/22/3
MMP-100D/SH/MCL/N・M/30B35/22/3
MMP-100D/SH/MCL/N・M/30B40/22/3
MMP-100D/SH/SCL/N・M/30B27/22/3
MMP-100D/SH/SCL/N・M/30B30/22/3
MMP-100D/SH/SCL/N・M/30B35/22/3
MMP-100D/SH/SCL/N・M/30B40/22/3

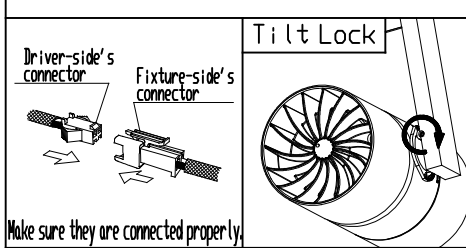
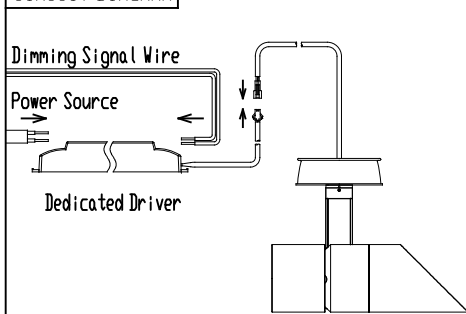
OPTION

Full Diffuser Lens Filter MLA-100/DF01
Semi Diffuser Lens Filter MLA-100/DS02
Full Spread Lens Filter MLA-100/SF01
Semi Spread Lens Filter MLA-100/SS01
Edge Control Lens Filters MLA-100/EC02
Sharpeners Lens MLA-100/SH01
(available only for narrow distribution)



PARTS	MATERIAL	REMARK
1 Hood	ADC	Acrylic Baking Finish
2 Option Holder	ADC	Acrylic Baking Finish
3 Reflector	Aluminum	
4 Body	ADC	Acrylic Baking Finish
5 LED Module		
6 Socket Holder	ADC	Acrylic Baking Finish
7 Arm	ADC	Acrylic Baking Finish
8 Cone	ADC	Acrylic Baking Finish
9 Safety Wire	Stainless Steel	
10 Safety connector	Resin	
11 Dedicated Driver		0-10V control dimming system
12 Tilt Protractor	Resin	

CIRCUIT DIAGRAM



ATTENTION

- Because there are variations in the LEDs, emission color and brightness would be different even within the same model.
- Do not use a radio or TV near the fixture. The unit may generate noise in the radio or TV.
- Danger! Do not remodel the fixture.
- Use 0-10V control dimming system (SR-2830AS-1-10V(Sold separately)) only
- Please use constant current driver.
- There is no sending terminal block on the dedicated driver (primary side).
- Connect input-side power wire to the dedicated driver directly.
- When connecting to the electric circuit, calculate the capacity in accordance with JIS C8155 standard.
- Do not cover the fixture with a heat insulator etc.
- Be sure to connect a safety wire to the fixture and mounting frame.
- Use within 0°C~35°C ambient temperature range.
- The fixture is ceiling mounting exclusive use. Do not mount inclined ceilings or walls.

- Please do not move the fixture body under the situation the tilt lock works.
- Please do not unfasten the set screw for tilt lock too much. Otherwise, it may be dropped and lost.