

**SPECIFICATION**

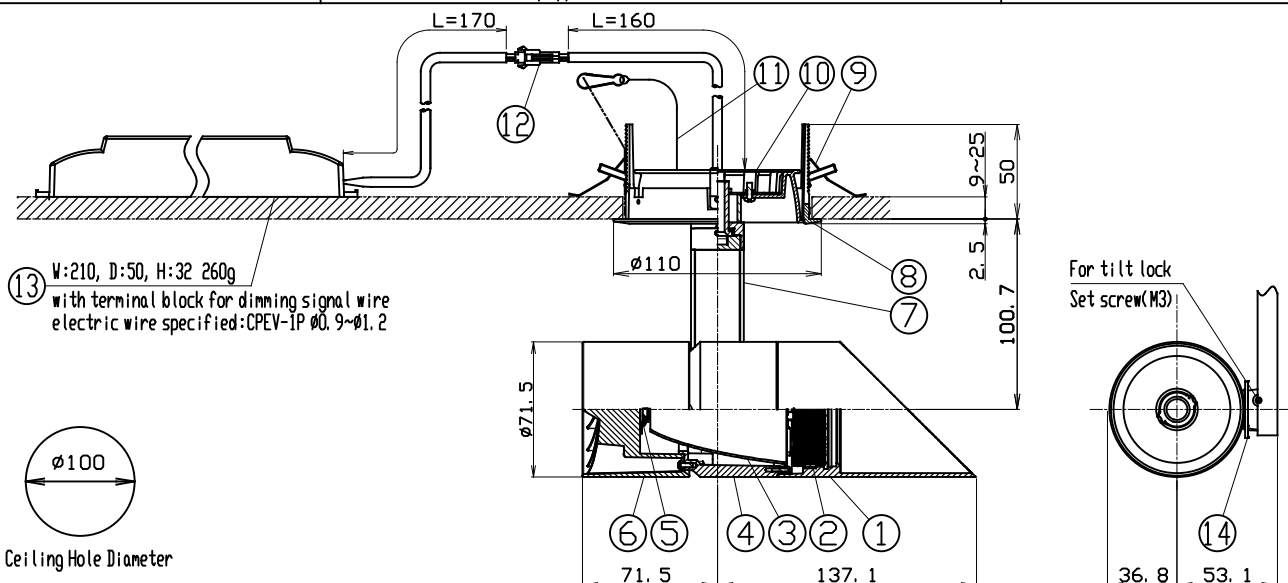
- Light Source LED Module (Mounted)
  - Body White(WC\*), Matte black(MC\*), Silver(SC\*)
  - Frame White(W), Matte black(M)
  - Light Distribution Narrow(N), Medium(M)
  - Vertical aiming angle Upper10°, Lower90°
  - Horizontal aiming angle 360°
  - Dimming method 0-10V
  - Input Voltage 220V±6%, 240V±6%(Dedicated driver input voltage)
  - Input current 0.200A(Dedicated driver input voltage, 220V input)  
0.185A(Dedicated driver input voltage, 240V input)
  - Power Consumption 39.7W(Included dedicated driver, 220V input)  
39.9W(Included dedicated driver, 240V input)
- \*The power consumption is measured based on the measuring method, JIS C 8105-3.
- Dedicated Driver Constant current ( 50/60Hz shared)
  - Fixture Input voltage 37.9V
  - Fixture Input current 0.9A
  - Dimming signal input current 2mA
  - Weight 980g(Includes dedicated driver)
  - Safety Wire is attached
  - tool for tilt lock is equipped

**PRODUCT CODE**

MMP-100D/SH/WCW•N•M/30B27/22/3  
MMP-100D/SH/WCW•N•M/30B30/22/3  
MMP-100D/SH/WCW•N•M/30B35/22/3  
MMP-100D/SH/WCW•N•M/30B40/22/3  
MMP-100D/SH/MCM•N•M/30B27/22/3  
MMP-100D/SH/MCM•N•M/30B30/22/3  
MMP-100D/SH/MCM•N•M/30B35/22/3  
MMP-100D/SH/MCM•N•M/30B40/22/3  
MMP-100D/SH/SCW•SCM•N•M/30B27/22/3  
MMP-100D/SH/SCW•SCM•N•M/30B30/22/3  
MMP-100D/SH/SCW•SCM•N•M/30B35/22/3  
MMP-100D/SH/SCW•SCM•N•M/30B40/22/3

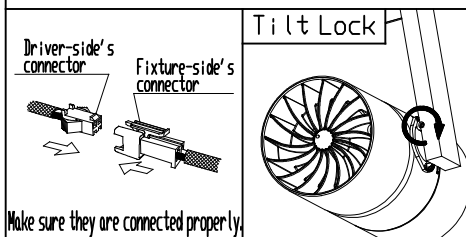
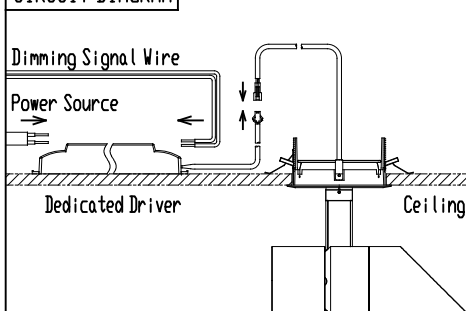
**OPTION**

Full Diffuser Lens Filter MLA-100/DF01  
Semi Diffuser Lens Filter MLA-100/DS02  
Full Spread Lens Filter MLA-100/SF01  
Semi Spread Lens Filter MLA-100/SS01  
Edge Control Lens Filters MLA-100/EC02  
Sharpener Lens MLA-100/SH01  
(available only for narrow distribution)



PARTS	MATERIAL	REMARK
1 Hood	ADC	Acrylic Baking Finish
2 Option Holder	ADC	Acrylic Baking Finish
3 Reflector	Aluminum	
4 Body	ADC	Acrylic Baking Finish
5 LED Module		
6 Socket Holder	ADC	Acrylic Baking Finish
7 Arm	ADC	Acrylic Baking Finish
8 Flame	ADC	Acrylic Baking Finish
9 Unit Mounting Spring	Stainless Steel	
10 Cone	ADC	Acrylic Baking Finish
11 Safety Wire	Stainless Steel	
12 Safety connector	Resin	
13 Dedicated Driver		0-10V control dimming system
14 Tilt Protractor	Resin	

**CIRCUIT DIAGRAM**



**ATTENTION**

- Because there are variations in the LEDs, emission color and brightness would be different even within the same model.
- Do not use a radio or TV near the fixture. The unit may generate noise in the radio or TV.
- Danger! Do not remodel the fixture.
- Use 0-10V control dimming system (SR-2830AS-1-10V(Sold separately)) only
- The height of inside the ceiling have to be 150mm or more to install the driver there.
- Please use constant current driver.
- There is no sending terminal block on the dedicated driver (primary side).
- Connect input-side power wire to the dedicated driver directly.
- When connecting to the electric circuit, calculate the capacity in accordance with JIS C8155 standard.
- Do not cover the fixture with a heat insulator etc.
- Be sure to connect a safety wire to the fixture and mounting frame.
- Use within 0°C~35°C ambient temperature range.
- The fixture is ceiling mounting exclusive use. Do not mount inclined ceilings or walls.

- Please do not move the fixture body under the situation the tilt lock works.
- Please do not unfasten the set screw for tilt lock too much. Otherwise, it may be dropped and lost.