

## SPECIFICATION

- Light Source LED Module (Mounted)
- Body White(WC\*), Matte black(MC\*), Silver(SC\*)
- Light Distribution Narrow(N), Medium(M)
- Vertical aiming angle Upper10°, Lower90°
- Horizontal aiming angle 360°
- Dimming method 0-10V
- Input Voltage 220V±6%, 240V±6%(Dedicated driver input voltage)
- Input current 0.200A(Dedicated driver input voltage, 220V input)  
0.185A(Dedicated driver input voltage, 240V input)
- Power Consumption 39.7W(Included dedicated driver, 220V input)  
39.9W(Included dedicated driver, 240V input)
- \*The power consumption is measured based on the measuring method, JIS C 8105-3.
- Dedicated Driver Constant current ( 50/60Hz shared)
- Fixture Input voltage 37.9V
- Fixture Input current 0.9A
- Dimming signal input current 2mA
- Weight 900g(Includes dedicated driver)
- Safety Wire is attached
- tool for tilt lock is equipped

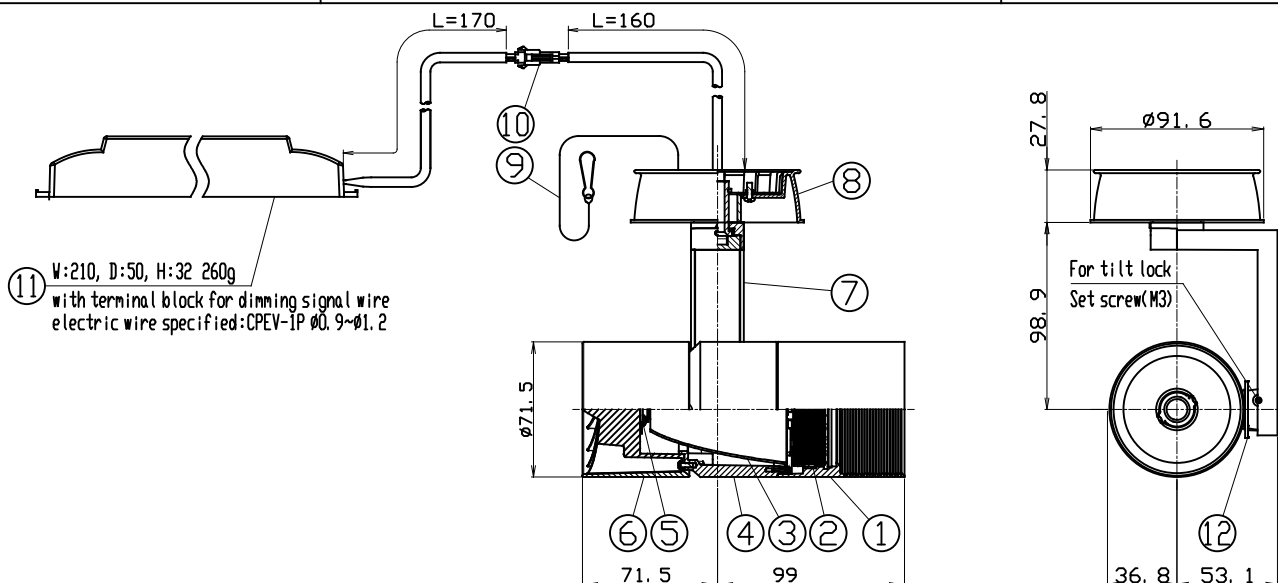
PRODUCT CODE
--------------

MMP-100D/3H/WCL/N-W/30B27/72/3  
MMP-100D/3H/WCL/N-W/30B30/72/3  
MMP-100D/3H/WCL/N-W/30B35/72/3  
MMP-100D/3H/WCL/N-W/30B40/72/3  
MMP-100D/3H/MCL/N-W/30B27/72/3  
MMP-100D/3H/MCL/N-W/30B30/72/3  
MMP-100D/3H/MCL/N-W/30B35/72/3  
MMP-100D/3H/MCL/N-W/30B40/72/3  
MMP-100D/3H/SCL/N-W/30B27/72/3  
MMP-100D/3H/SCL/N-W/30B30/72/3  
MMP-100D/3H/SCL/N-W/30B35/72/3  
MMP-100D/3H/SCL/N-W/30B40/72/3

OPTION
--------

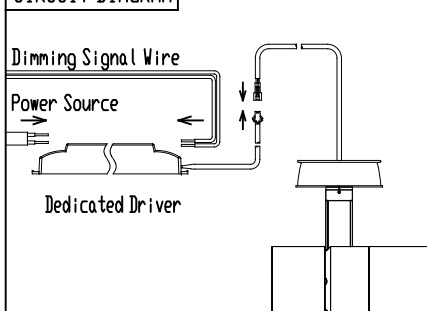
Full Diffuser Lens Filter	MLA-100/DF01
Semi Diffuser Lens Filter	MLA-100/DS02
Full Spread Lens Filter	MLA-100/SF01
Semi Spread Lens Filter	MLA-100/SS01
Edge Control Lens Filters	MLA-100/EC02
Sharpeners Lens	MLA-100/S001

(available only for narrow distribution)

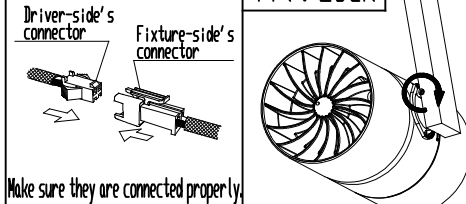


	PARTS	MATERIAL	REMARK
1	Hood	ADC	Acrylic Baking Finish
2	Option Holder	ADC	Acrylic Baking Finish
3	Reflector	Aluminum	_____
4	Body	ADC	Acrylic Baking Finish
5	LED Module	_____	_____
6	Socket Holder	ADC	Acrylic Baking Finish
7	Arm	ADC	Acrylic Baking Finish
8	Cone	ADC	Acrylic Baking Finish
9	Safety Wire	Stainless Steel	_____
10	Safety connector	Resin	_____
11	Dedicated Driver	_____	0-10V control dimming system
12	Tilt Protractor	Resin	_____

## CIRCUIT DIAGRAM



	Tilt Lock
--	-----------

**ATTENTION**

- Because there are variations in the LEDs, emission color and brightness would be different even within the same model.
- Do not use a radio or TV near the fixture. The unit may generate noise in the radio or TV.
- Danger! Do not remodel the fixture.
- Use 0-10V control dimming system (SR-2830AS-1-10V(Sold separately)) only
- Please use constant current driver.
- There is no sending terminal block on the dedicated driver (primary side).
- Connect input-side power wire to the dedicated driver directly.
- When connecting to the electric circuit, calculate the capacity in accordance with JIS C8155 standard.
- Do not cover the fixture with a heat insulator etc.
- Be sure to connect a safety wire to the fixture and mounting frame.
- Use within 0°C~35°C ambient temperature range.
- The fixture is ceiling mounting exclusive use. Do not mount inclined ceilings or walls.

- Please do not move the fixture body under the situation the tilt lock works.
- Please do not unfasten the set screw for tilt lock too much. Otherwise, it may be dropped and lost.

**ModuleX**  
ModuleX Inc.

# SPECIFICATION SHEET

SCALE  
1/4

CREATED DATE  
14/DEC/2018

REVISION DATE