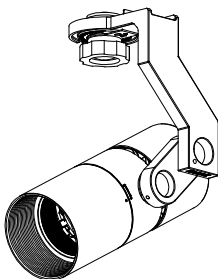


Discontinued product



SPECIFICATION

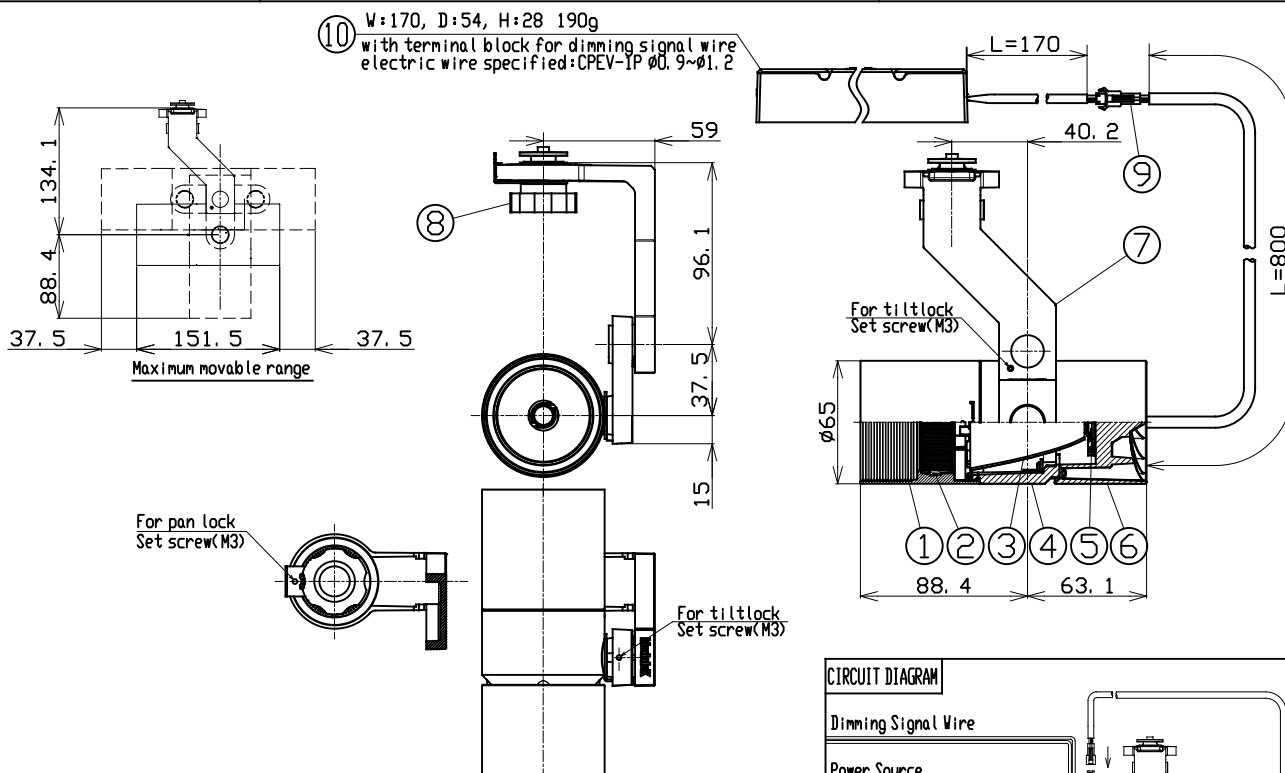
- Light Source LED Module (Mounted)
 - Body Matte black(M)
 - Light Distribution Narrow(N)・Medium(M)
 - Vertical aiming angle Upper10°・Lower90°
 - Horizontal aiming angle 254°
 - Dimming method 0-10V
 - Input Voltage 220V±6%, 240V±6% (Dedicated driver input voltage)
 - Input current 0.102A (Dedicated driver input voltage, 220V input)
0.095A (Dedicated driver input voltage, 240V input)
 - Power Consumption 20.6W (Included dedicated driver, 220V input)
20.7W (Included dedicated driver, 242V input)
- *The power consumption is measured based on the measuring method, JIS C 8105-3.
- Dedicated Driver Constant current (50/60Hz shared)
 - Fixture Input voltage 37.1V
 - Fixture Input current 0.5A
 - Dimming signal input current 2mA
 - Weight 720g (Included dedicated driver)
 - tool for pan/tilt lock is equipped

PRODUCT CODE

MMP-080S/3H/M/LE/N・M/10B27/Z2/3
MMP-080S/3H/M/LE/N・M/10B30/Z2/3
MMP-080S/3H/M/LE/N・M/10B35/Z2/3
MMP-080S/3H/M/LE/N・M/10B40/Z2/3

OPTION

Full Diffuser Lens Filter MLA-080/DF01
Semi Diffuser Lens Filter MLA-080/DS03
Full Spread Lens Filter MLA-080/SF01
Semi Spread Lens Filter MLA-080/SS01
Edge Control Lens Filters MLA-080/EC02
Sharpen Lens MLA-080/SO01
(available only for narrow distribution)



| | PARTS | MATERIAL | REMARK |
|----|------------------|----------|------------------------------|
| 1 | Hood | ADC | Acrylic Baking Finish |
| 2 | Option Holder | ADC | Acrylic Baking Finish |
| 3 | Reflector | Aluminum | |
| 4 | Body | ADC | Acrylic Baking Finish |
| 5 | LED Module | | |
| 6 | Socket Holder | ADC | Acrylic Baking Finish |
| 7 | Arm | ADC | Acrylic Baking Finish |
| 8 | Grip Bolt | Resin | |
| 9 | Safety Connector | Resin | |
| 10 | Dedicated Driver | | 0-10V control dimming system |

ATTENTION

- Emission color and brightness would be different even within the same model.
- Do not use a radio or TV near the fixtures. The unit may generate noise in the radio or TV.
- Danger! Do not remodel fixtures.
- Please do not install to the wall or floor.
- Use the dedicated driver only.
- There is no sending terminal block on the dedicated driver (primary side).
- Connect input-side power wire to the dedicated driver directly.
- Calculate the capacity in accordance with JIS C8155 standard.
- Use within 0~35% ambient temperature range.
- Use 0-10V control dimming system (SR-2830AS-1-10V(Sold separately)) only
- Keep distance of the fixtures and objects 0.2m or more.
- To remove heat, place an air hole when installing the fixture in a fitting.
(Place air holes equally in the upper side of the fitting. Total aperture size should be more than 5% of the fitting's surface)
- Please do not move the fixture body under the situation the pan/tilt lock works.
- Please do not unfasten the set crew for pan/tilt lock too much. Otherwise, it may be dropped and lost.

