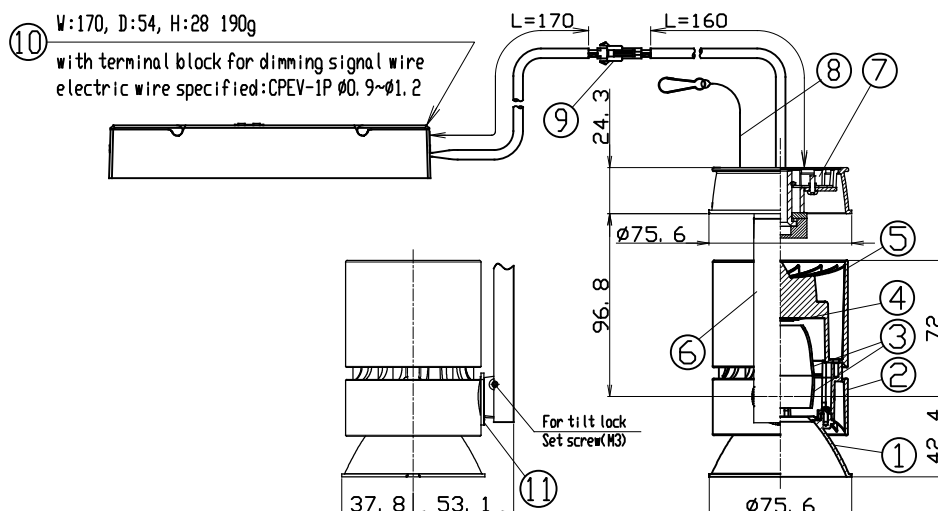


**SPECIFICATION**

- Light Source LED Module (Mounted)
  - Cone White Cone(FW), Matte black Cone(FM), Chrome Cone(FC)
  - Body White(WC\*), Matte black(MC\*), Silver(SC\*)
  - Light Distribution Flood(F)
  - Vertical aiming angle 100°
  - Horizontal aiming angle 360°
  - Input Voltage 220V±6%, 240V±6% (Dedicated driver input voltage)
  - Input current 0.148A (Dedicated driver input voltage, 220V input)  
0.136A (Dedicated driver input voltage, 240V input)
  - Power Consumption 29.3W (Included dedicated driver, 220V input)  
29.4W (Included dedicated driver, 240V input)
- \*The power consumption is measured based on the measuring method, JIS C 8105-3.
- Fixture Input voltage 36.8V
  - Fixture Input current 0.7A
  - Dimming signal input current 2mA
  - Dedicated Driver Constant current (50/60Hz shared)
  - Dimming method 0-10V
  - Weight 750g (Includes dedicated driver)
  - Safety Wire is attached
  - tool for tilt lock is equipped

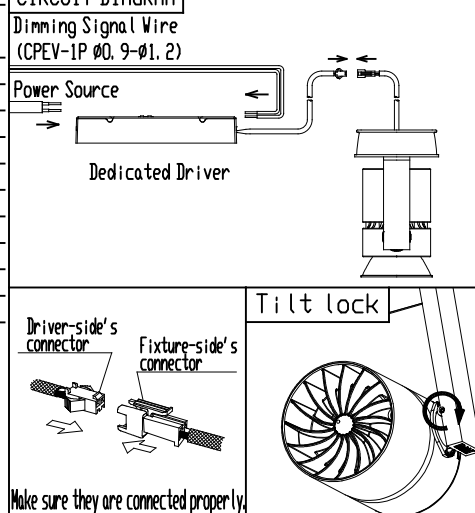
**PRODUCT CODE**

- MMP-080D/FW/WCL/F/20B27/Z2/3  
 MMP-080D/FW/WCL/F/20B30/Z2/3  
 MMP-080D/FW/WCL/F/20B35/Z2/3  
 MMP-080D/FW/WCL/F/20B40/Z2/3
- MMP-080D/FM/MCL/F/20B27/Z2/3  
 MMP-080D/FM/MCL/F/20B30/Z2/3  
 MMP-080D/FM/MCL/F/20B35/Z2/3  
 MMP-080D/FM/MCL/F/20B40/Z2/3
- MMP-080D/FC/SCL/F/20B27/Z2/3  
 MMP-080D/FC/SCL/F/20B30/Z2/3  
 MMP-080D/FC/SCL/F/20B35/Z2/3  
 MMP-080D/FC/SCL/F/20B40/Z2/3



	PARTS	MATERIAL	REMARK
1	Cone	ADC	WC, MC: Acrylic Baking Finish CC: Plating Finish
2	Body	ADC	Acrylic Baking Finish
3	Reflector	Aluminum	
4	LED Module		
5	Socket Holder	ADC	Acrylic Baking Finish
6	Arm	ADC	Acrylic Baking Finish
7	Cone	ADC	Acrylic Baking Finish
8	Safety Wire	Stainless Steel	
9	Safety Connector	Resin	
10	Dedicated Driver		0-10V control dimming system
11	Tilt Protractor	Resin	

**CIRCUIT DIAGRAM**



**ATTENTION**

- Emission color and brightness would be different even within the same model.
- Do not use a radio or TV near the fixture. The unit may generate noise in the radio or TV.
- Danger! Do not remodel the fixture.
- Please use constant current driver.
- There is no sending terminal block on the dedicated driver (primary side).
- Use 0-10V control dimming system (SR-2830AS-1-10V (Sold separately)) only
- Do not cover the fixture with the heat insulator etc.
- Be sure to connect a safety wire to the fixture and mounting frame.
- Keep distance of the fixtures and objects 0.2m or more.
- The fixture is ceiling mounting exclusive use.  
Do not mount inclined ceilings or walls.
- Connect input-side power wire to the approved driver directly.
- Calculate the capacity in accordance with JIS C8155 standard.

- Use within 0°C~35°C ambient temperature range
- Please do not move the fixture body under the situation the tilt lock works.
- Please do not unfasten the set screw for tilt lock too much.  
Otherwise, it may be dropped and lost.