

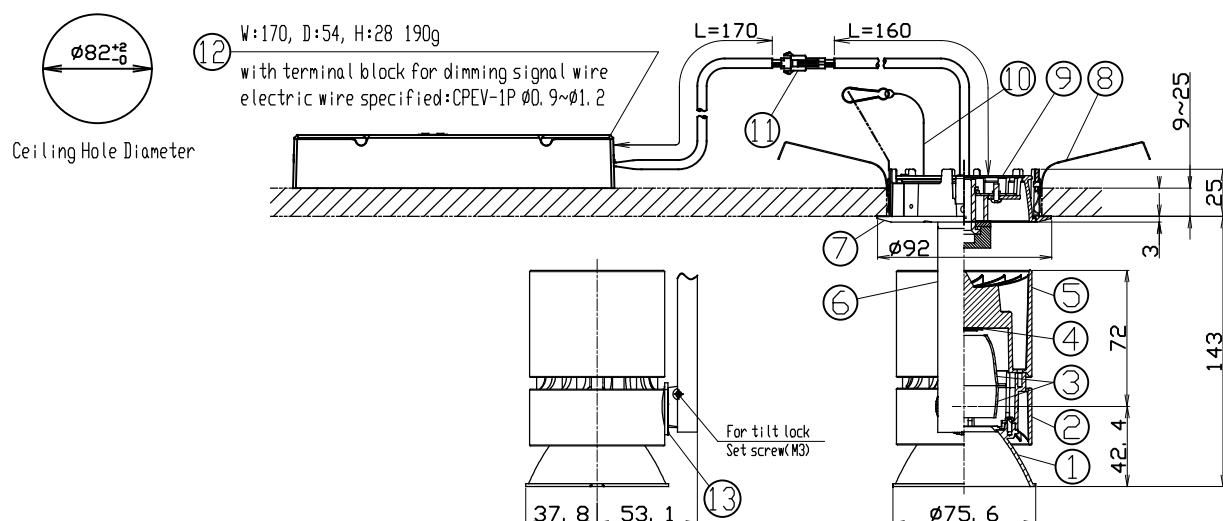
SPECIFICATION

- Light Source LED Module (Mounted) #Ra93 typ
- Cone White Cone(FW), Matte black Cone(FM), Chrome Cone(FC)
- Body White(WC*), Matte black(MC*), Silver(SC*)
- Frame White(W), Matte black(M)
- Light Distribution Flood(F)
- Vertical aiming angle 100°
- Horizontal aiming angle 360°
- Input Voltage 220V±6%, 240V±6% (Dedicated driver input voltage)
- Input current 0.148A (Dedicated driver input voltage, 220V input)
- Power Consumption 0.136A (Dedicated driver input voltage, 240V input)
- Fixture Input voltage 29.3W (Included dedicated driver, 220V input)
- Fixture Input current 29.4W (Included dedicated driver, 240V input)
- Dimming signal input current 2mA
- Dedicated Driver Constant current (50/60Hz shared)
- Dimming method 0-10V
- Weight 840g (Includes dedicated driver)
- Safety Wire is attached
- tool for tilt lock is equipped

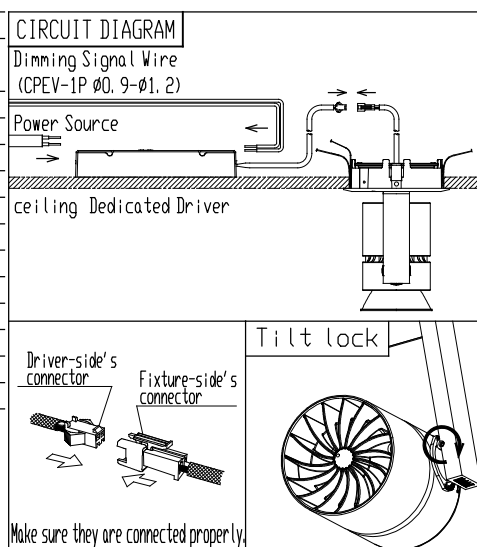
PRODUCT CODE

- MMP-080D/FW/WCW/F/20B27/Z2/3
MMP-080D/FW/WCW/F/20B30/Z2/3
MMP-080D/FW/WCW/F/20B35/Z2/3
MMP-080D/FW/WCW/F/20B40/Z2/3
- MMP-080D/FM/MCM/F/20B27/Z2/3
MMP-080D/FM/MCM/F/20B30/Z2/3
MMP-080D/FM/MCM/F/20B35/Z2/3
MMP-080D/FM/MCM/F/20B40/Z2/3
- MMP-080D/FC/SCW•SCM/F/20B27/Z2/3
MMP-080D/FC/SCW•SCM/F/20B30/Z2/3
MMP-080D/FC/SCW•SCM/F/20B35/Z2/3
MMP-080D/FC/SCW•SCM/F/20B40/Z2/3

[mm]



PARTS	MATERIAL	REMARK
1 Cone	ADC	WC, MC: Acrylic Baking Finish CC: Plating Finish
2 Body	ADC	Acrylic Baking Finish
3 Reflector	Aluminum	
4 LED Module		
5 Socket Holder	ADC	Acrylic Baking Finish
6 Arm	ADC	Acrylic Baking Finish
7 Mounting Frame	ADC	Acrylic Baking Finish
8 Unit Mounting Spring	Stainless Steel	
9 Cone	ADC	Acrylic Baking Finish
10 Safety Wire	Stainless Steel	
11 Safety Connector	Resin	
12 Dedicated Driver		0-10V control dimming system
13 Tilt Protractor	Resin	



ATTENTION

- Emission color and brightness would be different even within the same model.
- Do not use a radio or TV near the fixture. The unit may generate noise in the radio or TV.
- Danger! Do not remodel the fixture.
- Please use constant current driver.
- There is no sending terminal block on the dedicated driver (primary side).
- Use 0-10V control dimming system (SR-2830AS-1-10V (Sold separately)) only
- When the LED driver is installed above the ceiling, the minimum space of 150 mm around the LED drivers must be secured.
- Please refer to the Installation Guide about the conditions for the installation of the lighting fixtures.
- Do not cover the fixture with the heat insulator etc.
- Be sure to connect a safety wire to the fixture and mounting frame.
- Keep distance of the fixtures and objects 0.2m or more.
- The fixture is ceiling mounting exclusive use.
- Do not mount inclined ceilings or walls.
- Connect input-side power wire to the approved driver directly.
- Calculate the capacity in accordance with JIS C8155 standard.
- Use within 0~35° ambient temperature range
- Please do not move the fixture body under the situation the tilt lock works.
- Please do not unfasten the set screw for tilt lock too much.
- Otherwise, it may be dropped and lost.