

SPECIFICATION

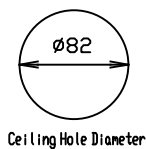
- Light Source LED Module (Mounted)
- Body Color White (WC*), Matte Black (MC*), Silver (SC*)
- Frame Color White (W), Matte Black (M)
- Distribution Narrow(N), Medium(M)
- Tilt Angle Upper 10°, Lower 90°
- Pan Angle 360°
- Dimming method 0-10V
- Input Voltage 220V±6%, 240V±6% (Dedicated driver input voltage)
- Input current 0.102A (Dedicated driver input voltage, 220V input)
- Power Consumption 20.6W (Included dedicated driver, 220V input)
- 20.7W (Included dedicated driver, 240V input)
- *The power consumption is measured based on the measuring method, JIS C 8105-3.
- Dedicated Driver Constant current (50/60Hz shared)
- Fixture Input voltage 37.1V
- Fixture Input current 0.5A
- Dimming signal input current 2mA
- Weight 720g (Includes dedicated driver)
- Safety Wire is attached
- tool for tilt lock is equipped

PRODUCT CODE

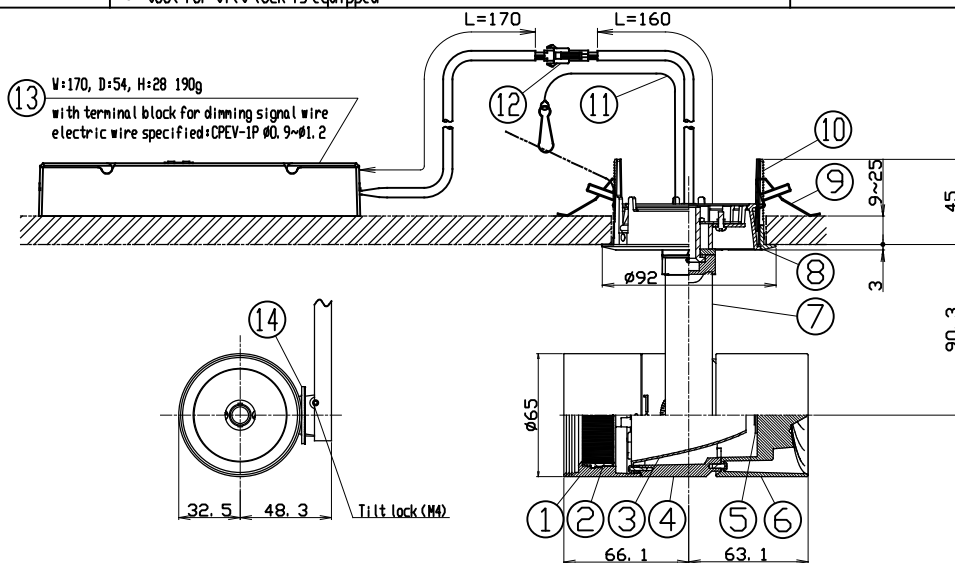
- MMP-080D/1H/WCW·N·M/10B27/22/3
- MMP-080D/1H/WCW·N·M/10B30/22/3
- MMP-080D/1H/WCW·N·M/10B35/22/3
- MMP-080D/1H/WCW·N·M/10B40/22/3
- MMP-080D/1H/MCM·N·M/10B27/22/3
- MMP-080D/1H/MCM·N·M/10B30/22/3
- MMP-080D/1H/MCM·N·M/10B35/22/3
- MMP-080D/1H/MCM·N·M/10B40/22/3
- MMP-080D/1H/SCW·SCM·N·M/10B27/22/3
- MMP-080D/1H/SCW·SCM·N·M/10B30/22/3
- MMP-080D/1H/SCW·SCM·N·M/10B35/22/3
- MMP-080D/1H/SCW·SCM·N·M/10B40/22/3

OPTION

- Full Diffuser Lens Filter MLA-080/DF01
- Semi Diffuser Lens Filter MLA-080/DS03
- Full Spread Lens Filter MLA-080/SF01
- Semi Spread Lens Filter MLA-080/SS01
- Edge Control Lens Filter MLA-080/EC02
- Sharpen Lens MLA-080/SH01
- (available only for narrow distribution)

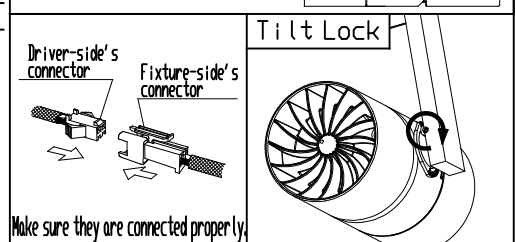
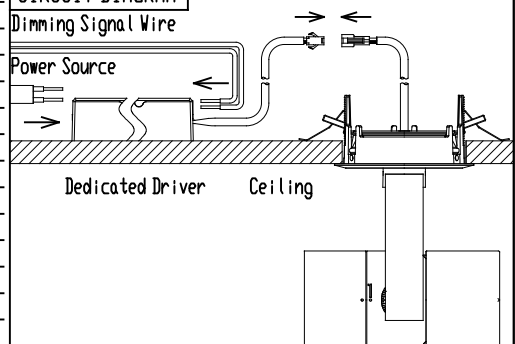


Ceiling Hole Diameter



PARTS	MATERIAL	REMARK
1 Hood	ADC	Acrylic Baking Finish
2 Option Holder	ADC	Acrylic Baking Finish
3 Reflector	Aluminum	
4 Body	ADC	Acrylic Baking Finish
5 LED Module		
6 Socket Holder	ADC	Acrylic Baking Finish
7 Arm	ADC	Acrylic Baking Finish
8 Cone	ADC	Acrylic Baking Finish
9 Unit Mounting Spring	Stainless Steel	
10 Mounting Frame	ADC	Acrylic Baking Finish
11 Safety Wire	Stainless Steel	
12 Safety Connector	Resin	
13 Dedicated Driver		0-10V control dimming system
14 Tilt Protractor	Resin	

CIRCUIT DIAGRAM



ATTENTION

- Because there are variations in the LEDs, emission color and brightness would be different even within the same model.
- Do not use a radio or TV near the fixture. The unit may generate noise in the radio or TV.
- Danger! Do not remodel the fixture.
- Please use constant current driver.
- There is no sending terminal block on the dedicated driver (primary side).
- Calculate the capacity in accordance with JIS C8155 standard.
- Use 0-10V control dimming system (SR-2830AS-1-10V (Sold separately)) only
- Connect a safety wire to the fixture and mounting frame directly.
- The height of inside the ceiling have to be 150mm or more to install the driver there.
- Please do not unfasten the set screw for tilt lock too much. Otherwise, it may be dropped and lost.
- Use within 0~35° ambient temperature range
- Keep distance of the fixtures and objects 0.2m or more.
- Please do not move the fixture body under the situation the tilt lock works.
- Do not cover the fixture with a heat insulator etc.
- The fixture is ceiling mounting exclusive use. Do not mount inclined ceilings or walls.