

**SPECIFICATION**

- Light Source LED Module (Mounted)
  - Body White(W), Matte black(M), Silver(S)
  - Light Distribution Narrow(N), Medium(M)
  - Vertical aiming angle Upper10°, Lower90°
  - Horizontal aiming angle 380°
  - Dimming method 0-10V
  - Input Voltage 220V±6%, 240V±6%(Dedicated driver input voltage)
  - Input current 0.079A(Dedicated driver input voltage, 220V input)  
0.076A(Dedicated driver input voltage, 240V input)
  - Power Consumption 15.3W(Included dedicated driver, 220V input)  
15.5W(Included dedicated driver, 240V input)
- ※The power consumption is measured based on the measuring method, JIS C 8105-3.
- Dedicated Driver Constant current ( 50/60Hz shared)
  - Fixture Input voltage 32.6V
  - Fixture Input current 0.38A
  - Dimming signal input current 2mA
  - Weight 390g (Included dedicated driver)
  - tool for pan/tilt lock is equipped

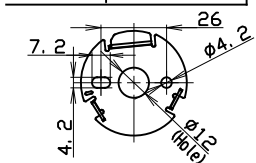
**PRODUCT CODE**

MMP-060S/5H/W·M·S/FS/N·M/10A24/Z2/3  
MMP-060S/5H/W·M·S/FS/N·M/10A27/Z2/3  
MMP-060S/5H/W·M·S/FS/N·M/10A30/Z2/3  
MMP-060S/5H/W·M·S/FS/N·M/10A35/Z2/3  
MMP-060S/5H/W·M·S/FS/N·M/10A40/Z2/3

**OPTION**

Full Diffuser Lens Filter MLA-060/DF01  
Semi Diffuser Lens Filter MLA-060/DS01  
Full Spread Lens Filter MLA-060/SF01  
Semi Spread Lens Filter MLA-060/SS01  
Edge Control Lens Filters MLA-060/EC01  
Sharpener Lens MLA-060/SH01  
(available only for narrow distribution)

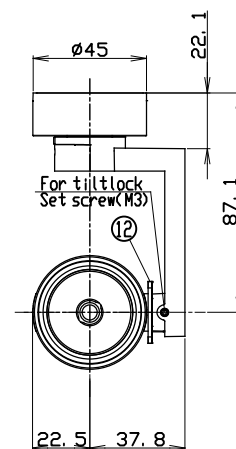
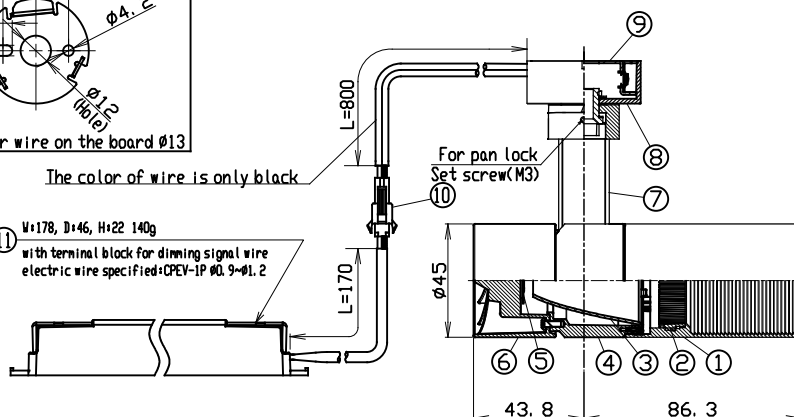
Attachment plate dimension



The hole for wire on the board Ø13

The color of wire is only black

⑪ W:178, D:46, H:22 140g  
with terminal block for dimming signal wire  
electric wire specified: CPEV-IP Ø0.9-Ø1.2

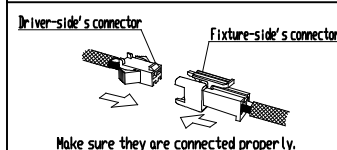
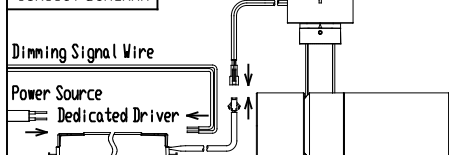


	PARTS	MATERIAL	REMARK
1	Hood	ADC	Acrylic Baking Finish
2	Option Holder	ADC	Acrylic Baking Finish
3	Reflector	Aluminum	
4	Body	ADC	Acrylic Baking Finish
5	LED Module		
6	Socket Holder	ADC	Acrylic Baking Finish
7	Arm	ADC	Acrylic Baking Finish
8	Flange Case	ADC	Acrylic Baking Finish
9	Attachment Plate	steel	
10	Safety Connector	Resin	
11	Dedicated Driver		0-10V control dimming system
12	Tilet Protractor	Resin	

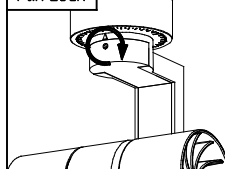
**ATTENTION**

- Emission color and brightness would be different even within the same model.
- Do not use a radio or TV near the fixtures. The unit may generate noise in the radio or TV.
- Danger! Do not remodel fixtures.
- Please do not irradiate the lamp upward. Dust accumulates in the light emitting part, which may cause fire.
- Use the dedicated driver only.
- There is no sending terminal block on the dedicated driver (primary side).
- Connect input-side power wire to the dedicated driver directly.
- Calculate the capacity in accordance with JIS C8155 standard.
- Use 0-10V control dimming system (SR-2830AS-1-10V(Sold separately)) only
- Keep distance of the fixtures and objects 0.1m or more.
- Use within 0℃~35℃ ambient temperature range.
- Please do not move the fixture body under the situation the pan/tilt lock works.
- Please do not unfasten the set crew for pan/tilt lock too much. Otherwise, it may be dropped and lost.
- Please install the attachment plate in the substrate area with the screw(M4).
- When attaching the main body to the attachment plate, please put the projection of the attachment plate in the triangle mark on the side of the flange case.
- After attaching the main body to the attachment plate, please make sure that the main body itself is surely locked.
- When taking off the main body from the attachment plate, please insert the stick whose diameter is less than Ø2mm into the hole on the side of the flange case to unlock.

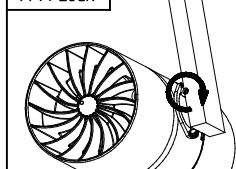
**CIRCUIT DIAGRAM**



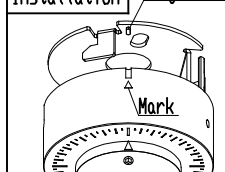
**Pan Lock**



**Tilt Lock**



**Installation**



**Projection**



**Unlock**

