

SPECIFICATION

- Light Source LED Module (Mounted)
 - Body White(W), Matte black(M), Silver(S)
 - Light Distribution Narrow(N), Medium(M)
 - Vertical aiming angle Upper10°, Lower90°
 - Horizontal aiming angle 380°
 - Dimming method 0-10V
 - Input Voltage 220V±6%, 240V±6%(Dedicated driver input voltage)
 - Input current 0.079A(Dedicated driver input voltage, 220V input)
0.076A(Dedicated driver input voltage, 240V input)
 - Power Consumption 15.3W(Included dedicated driver, 220V input)
15.5W(Included dedicated driver, 240V input)
- *The power consumption is measured based on the measuring method, JIS C 8105-3.
- Dedicated Driver Constant current (50/60Hz shared)
 - Fixture Input voltage 32.6V
 - Fixture Input current 0.38A
 - Dimming signal input current 2mA
 - Weight 370g (Included dedicated driver)
 - tool for pan/tilt lock is equipped

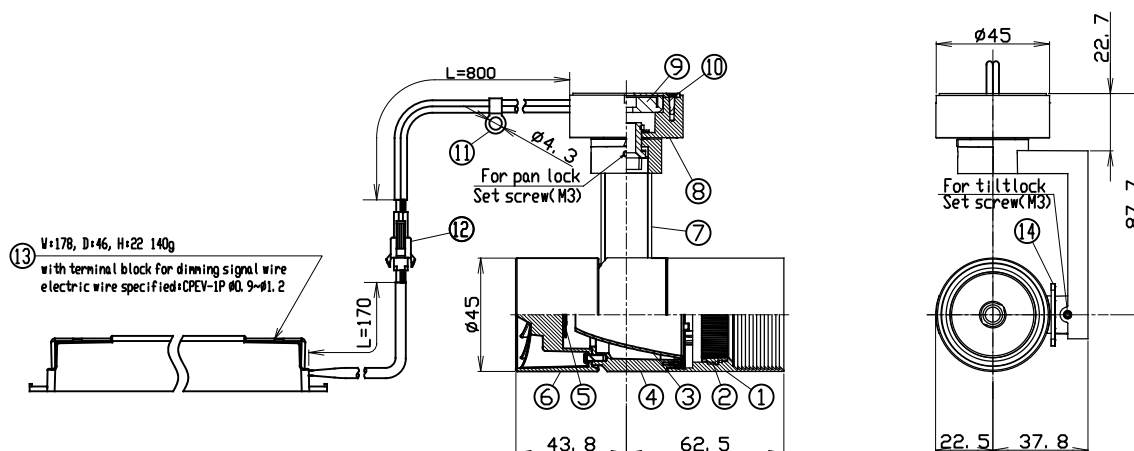
PRODUCT CODE

MMP-060S/3H/W·M·S/MS/N·M/10A24/Z2/3
MMP-060S/3H/W·M·S/MS/N·M/10A27/Z2/3
MMP-060S/3H/W·M·S/MS/N·M/10A30/Z2/3
MMP-060S/3H/W·M·S/MS/N·M/10A35/Z2/3
MMP-060S/3H/W·M·S/MS/N·M/10A40/Z2/3

OPTION

Full Diffuser Lens Filter MLA-060/DF01
Semi Diffuser Lens Filter MLA-060/DS01
Full Spread Lens Filter MLA-060/SF01
Semi Spread Lens Filter MLA-060/SS01
Edge Control Lens Filters MLA-060/EC01
Sharpener Lens MLA-060/SH01
(available only for narrow distribution)

[mm]

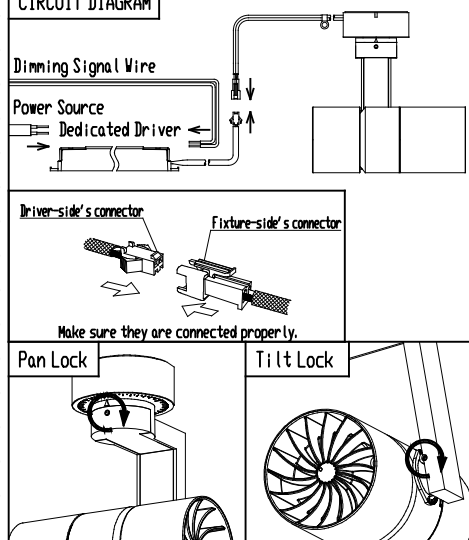


PARTS	MATERIAL	REMARK
1 Hood	ADC	Acrylic Baking Finish
2 Option Holder	ADC	Acrylic Baking Finish
3 Reflector	Aluminum	
4 Body	ADC	Acrylic Baking Finish
5 LED Module		
6 Socket Holder	ADC	Acrylic Baking Finish
7 Arm	ADC	Acrylic Baking Finish
8 Magnet Case	ADC	Acrylic Baking Finish
9 Magnet		
10 Magnet cover	Resin	
11 Safety clip	Brass	
12 Safty Connector	Resin	
13 Dedicated Driver		0-10V control dimming system
14 Tilet Protractor	Resin	

ATTENTION

- Emission color and brightness would be different even within the same model.
- Do not use a radio or TV near the fixtures. The unit may generate noise in the radio or TV.
- Danger! Do not remodel fixtures.
- Please do not irradiate the lamp upward. Dust accumulates in the light emitting part, which may cause fire.
- Use the dedicated driver only.
- There is no sending terminal block on the dedicated driver (primary side).
- Connect input-side power wire to the dedicated driver directly.
- Calculate the capacity in accordance with JIS C8155 standard.
- Use 0-10V control dimming system (SR-2830AS-1-10V(Sold separately)) only
- Keep distance of the fixtures and objects 0.1m or more.
- Use within 0°~35° ambient temperature range.
- Please do not move the fixture body under the situation the pan/tilt lock works.
- Please do not unfasten the set crew for pan/tilt lock too much. Otherwise, it may be dropped and lost.
- In order to prevent the falling, please install the safety clip attached to the fixture side cable with a screw (M4), in a firm place within 300mm from the appliance.
- Please be sure to install the fixture on an iron plate without irregularities.

CIRCUIT DIAGRAM



- After installing the fixture, please ensure that sufficient holding power is secured and not falling.
- Do not put the fixture close to electronic medical equipment such as pacemaker.
- Do not bring the fixture closer to the magnetic storage medium (floppy disk, magnetic card, etc.).
- Do not place the fixture close to various kinds of electronic equipment, video equipment, communication equipment (mobile phone, clock, etc.).
- Since there is a risk of the magnet being damaged, please do not make impact to the fixture.
- Please do not use under hot and humid environment.