

**SPECIFICATION**

- Light Source LED Module (Mounted)
- Body White(W), Matte black(M), Silver(S)
- Light Distribution N=Narrow, M=Medium
- Vertical aiming angle Upper10°, Lower90°
- Horizontal aiming angle 380°
- Dedicated Driver Constant current ( 50/60Hz shared)
- Fixture Input voltage 32.6V
- Fixture Input current 0.38A(MAX)
- Weight 230g
- tool for pan/tilt lock is equipped

**PRODUCT CODE**

- MMP-060S/3H/W·M·S/FC/N·M/10A24/DL/3
- MMP-060S/3H/W·M·S/FC/N·M/10A27/DL/3
- MMP-060S/3H/W·M·S/FC/N·M/10A30/DL/3
- MMP-060S/3H/W·M·S/FC/N·M/10A35/DL/3
- MMP-060S/3H/W·M·S/FC/N·M/10A40/DL/3

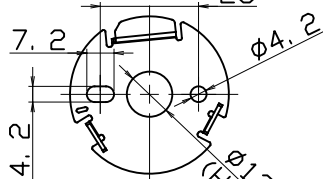
**OPTION**

- Full Diffuser Lens Filter MLA-060/DF01
- Semi Diffuser Lens Filter MLA-060/DS01
- Full Spread Lens Filter MLA-060/SF01
- Semi Spread Lens Filter MLA-060/SS01
- Edge Control Lens Filters MLA-060/EC01
- Sharpener Lens MLA-060/SH01 (Narrow only)

Attachment plate dimension

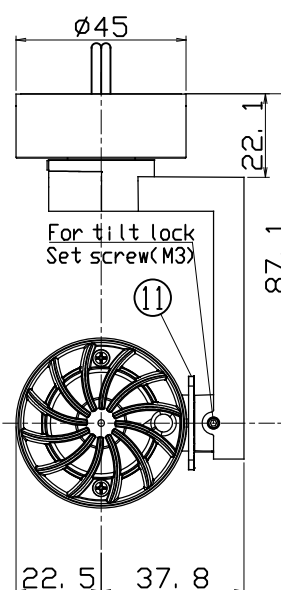
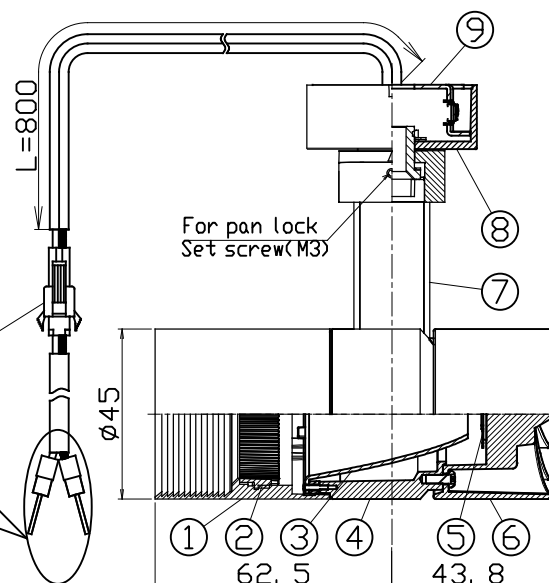
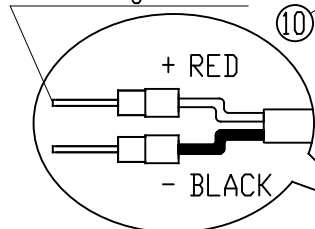
26

(mm)

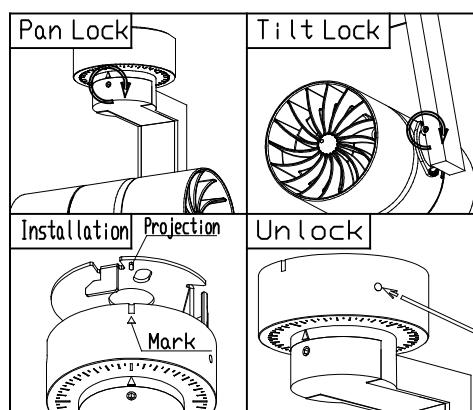


The hole for wire on the board φ13

(Terminal Dimension:  
φ1.0 x length 9.5mm)



	PARTS	MATERIAL	REMARK
1	Hood	ADC	Acrylic Baking Finish
2	Option Holder	ADC	Acrylic Baking Finish
3	Reflector	ADC	
4	Body	ADC	Acrylic Baking Finish
5	LED Module		
6	Socket Holder	ADC	Acrylic Baking Finish
7	Arm	ADC	Acrylic Baking Finish
8	Flange Case	ADC	Acrylic Baking Finish
9	Attachment Plate	Steel	
10	Safety Connector	Resin	
11	Tilt Protractor	Resin	



**ATTENTION**

- Emission color and brightness would be different even within the same model.
- Do not use a radio or TV near the fixtures. The unit may generate noise in the radio or TV.
- Danger! Do not remodel fixtures.
- Please do not irradiate the lamp upward. Dust accumulates in the light emitting part, which may cause fire.
- Keep distance of the fixtures and objects 0.1m or more.
- Use within 0℃~35℃ ambient temperature range
- Please do not move the fixture body under the situation the pan/tilt lock works.
- Please do not unfasten the set crew for pan/tilt lock too much. Otherwise, it may be dropped and lost.
- Please install the attachment plate in the substrate area with the screw(M4).
- When attaching the main body to the attachment plate, please put the projection of the attachment plate in the triangle mark on the side of the flange case.
- After attaching the main body to the attachment plate, please make sure that the main body itself is surely locked.
- When taking off the main body from the attachment plate, please insert the stick whose diameter is less than φ2mm into the hole on the side of the flange case to unlock.

- Please use the 'class2' driver.  
In that case, grounding is not required.