

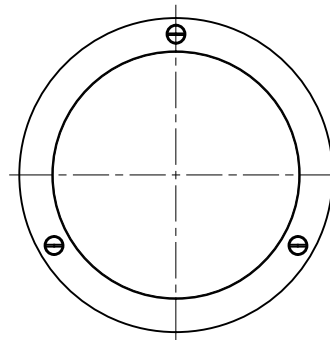
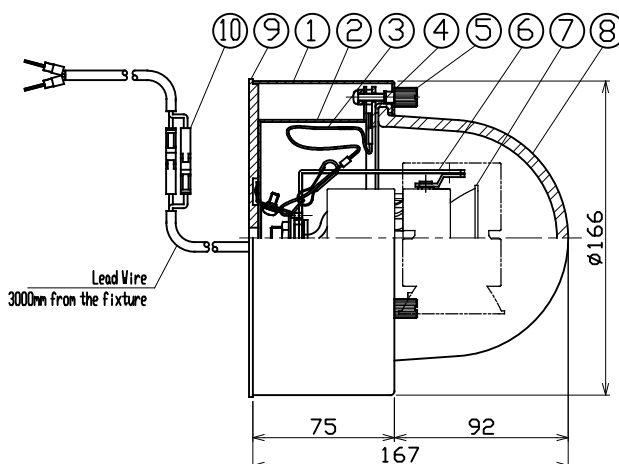
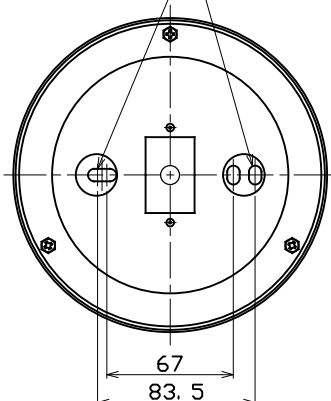
SPECIFICATION

- Light Source LED Module (Mounted)
- Light Distribution Medium(M), Wide(W)
- Input Voltage 100V±6% (Dedicated driver input voltage)
- Input Current 0.095A (Dedicated driver input voltage, 100V input)
- Power Consumption 8.3W (Dedicated driver input voltage, 100V input)
The power consumption is measured by the method stipulated in JIS C 8105-3.
- Dedicated Driver Constant current (50/60Hz shared)
- Fixture Input Voltage 9.6V
- Fixture Input Current 0.48A
- Weight 1.4Kg

PRODUCT CODE

MMP-060KH/M·W/10B27/DL/3

2-6.5x10 installation hole
6.5x15 installation hole

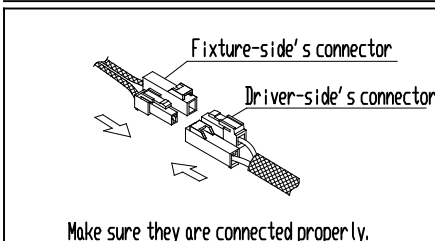
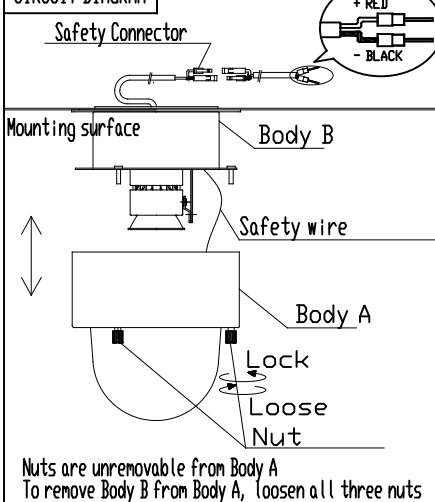


	PARTS	MATERIAL	REMARK
1	Body A	Aluminum	Acrylic Baking Finish (Silver)
2	Body B	Stainless	Material Origin Color
3	Safety wire	Stainless	Material Origin Color
4	Gasket for Globe	Silicon Rubber	Black
5	Nut	Brass	plating
6	Arm	Steel	Acrylic Baking Finish (Matte Black)
7	Fixture	ADC	Acrylic Baking Finish (Matte Black)
8	Globe	Hard Glass	Transparence
9	Gasket	Silicon Rubber	Natural
10	Safety Connector	Resin	

ATTENTION

- Fixture is for range hood
Do not use it under such condition as much lower temperature(below 0℃) and higher temperature(more than 70℃).
- Installed only on the ceiling or on the wall
Any non-compliance of the specification may cause electrification or fire
- Use the outlet box under normal humidity condition
Any non-compliance of the specification may cause electrification due to insulation failure
- To attach the fixture on patterned indented surface, make sure to use waterproof sealing material between gasket and the surface
Any non-compliance of the specification may cause electrification due to insulation failure
- Danger ! Do not remodel fixtures.
- Keep more than 0.1m distance between the fixture and objects
- Do not rinse the fixture in water
(cause of fire, electrification, falling, rust due to water leakage)
- Use the compatible dimmer SX-CD800 TRI (separately sold) with more than 5 fixtures.
- Use the dedicated driver only.
- Connect input-side power wire to the approved driver directly.
- The ambience temperature around the driver must be within 0℃~35℃ and the humidity must be 35%~85%.
- Install the driver where the inspection is possible.
- Emission color and brightness would be different even within the same model.
- Do not use a radio or TV near the fixtures. The unit may generate noise in the radio or TV.
- Remove the glass globe while lighting. • calculate the capacity in accordance with JIS C8155 standard.

CIRCUIT DIAGRAM



Accessory parts

