

SPECIFICATION

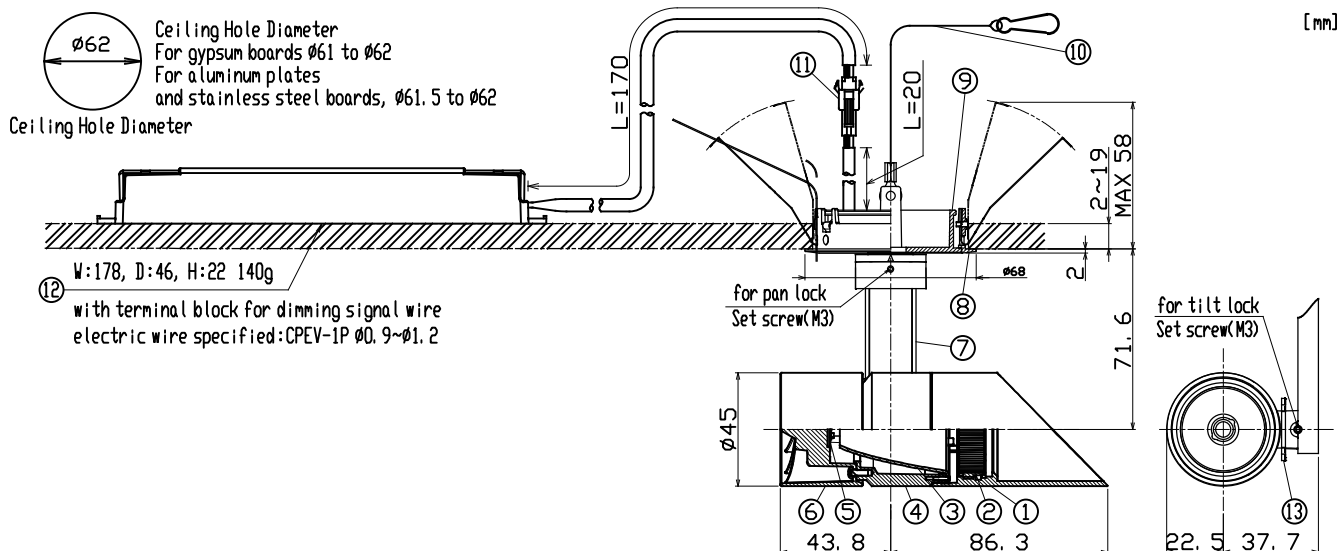
- Light Source LED Module (Mounted)
- Light Distribution Narrow(N), Medium(M)
- Body White(W), Matte black(M), Silver(S)
- Corn White Corn(WC-SW), Matte black Corn(MC-SM)
- Frame White(**W), Matte black(**M)
- Vertical aiming angle Upper10°, Lower90°
- Horizontal aiming angle 345°
- Dimming method 0-10V
- Input Voltage 220V±6%, 240V±6%(Dedicated driver input voltage)
- Input current 0.079A(Dedicated driver input voltage, 220V input)
0.076A(Dedicated driver input voltage, 240V input)
- Power Consumption 15.3W(Included dedicated driver, 220V input)
15.5W(Included dedicated driver, 240V input)
- *The power consumption is measured based on the measuring method, JIS C 8105-3.
- Dedicated Driver Constant current (50/60Hz shared)
- Fixture Input voltage 32.6V
- Fixture Input current 0.38A
- Dimming signal input current 2mA
- Weight 360g(Includes dedicated driver)
- Safety Wire is attached
- tool for pan/tilt lock is equipped

PRODUCT CODE

- MMP-060D/SH/VCW-MCM-N-M/10A24/Z2/3
MMP-060D/SH/VCW-MCM-N-M/10A27/Z2/3
MMP-060D/SH/VCW-MCM-N-M/10A30/Z2/3
MMP-060D/SH/VCW-MCM-N-M/10A35/Z2/3
MMP-060D/SH/VCW-MCM-N-M/10A40/Z2/3
- MMP-060D/SH/SWW-SMM-N-M/10A24/Z2/3
MMP-060D/SH/SWW-SMM-N-M/10A27/Z2/3
MMP-060D/SH/SWW-SMM-N-M/10A30/Z2/3
MMP-060D/SH/SWW-SMM-N-M/10A35/Z2/3
MMP-060D/SH/SWW-SMM-N-M/10A40/Z2/3

OPTION

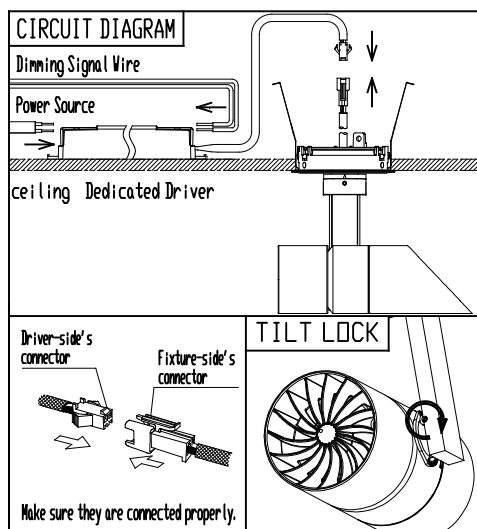
- Full Diffuser Lens Filter MLA-060/DF01
Semi Diffuser Lens Filter MLA-060/DS01
Full Spread Lens Filter MLA-060/SF01
Semi Spread Lens Filter MLA-060/SS01
Edge Control Lens Filter MLA-060/EC01
Sharpener Lens MLA-060/SH01
(available only for narrow distribution)



PARTS	MATERIAL	REMARK
1 Hood	ADC	Acrylic Baking Finish
2 Option Holder		
3 Reflector	Aluminum	
4 Body	ADC	Acrylic Baking Finish
5 LED Module		
6 Socket Holder	ADC	Acrylic Baking Finish
7 Arm	ADC	Acrylic Baking Finish
8 Mounting Frame	ADC	Acrylic Baking Finish
9 Cone	ADC	Acrylic Baking Finish
10 Safety Wire	Stainless Steel	
11 Safety Connector	Resin	
12 Dedicated Driver		0-10V control dimming system
13 Tilt Protractor	Resin	

ATTENTION

- Emission color and brightness would be different even within the same model.
- Do not use a radio or TV near the lighting fixtures. The unit may generate noise in the radio or TV.
- Danger! Do not remodel fixtures.
- Use the dedicated driver only.
- There is no sending terminal block on the dedicated driver (primary side).
- Connect input-side power wire to the dedicated driver directly.
- Calculate the capacity in accordance with JIS C8155 standard.
- Use 0-10V control dimming system (SR-2830AS-1-10V(Sold separately)) only
- The height of inside the ceiling have to be 140mm or more to install the driver there.
- Do not cover the lighting fixture with insulation etc.
- Please do not move the fixture body under the situation the pan/tilt lock works.
- Be sure to connect the included safety wire to the lighting fixture and frame.
- Keep distance of the fixtures and objects 0.1m or more.
- Use within 0°C~35°C ambient temperature range



- Please do not unfasten the set screw for pan/tilt lock too much. Otherwise, it may be dropped and lost.
- Install this lighting fixtures only on the ceiling. It can not be mounted on inclined ceilings or walls.
- Place the driver on the ceiling and attach the frame. (Please be sure to check the instruction manual)
- Please do not irradiate the lighting fixtures upward. Dust accumulates in the light emitting part, which may cause fire.