



NAME

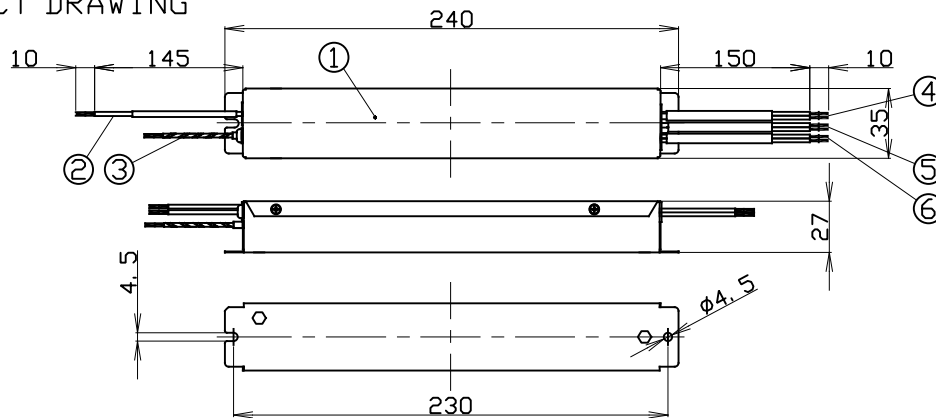
Constant Voltage Power Supply

CAT. NO.

NTC-E060CV0241

1. PRODUCT DRAWING

[mm]



	PARTS NAME	REMARK
1	Body	—
2	Input wire	White, Black AWG18
3	Ground wire	Yellow/Green AWG16
4	Output wire	Red: +, Black: - AWG18
5	PWM Dimming signal wire	White (Nonpolar) AWG18
6	0-10V Dimming signal wire	Purple: +, Gray: - AWG18

2. SPECIFICATION

Input Current・frequency	AC100V~242V 50/60Hz
Power factor	0.97(AC100V)/0.94(AC200V)/0.9(AC242V)
Weight	465g
Rated output voltage	DC24V
Output current(MAX)	2.5A
Output power(MAX)	60W

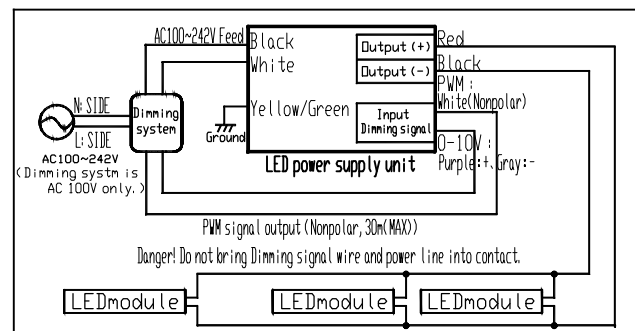
3. FUNCTION

Dimming	PWM/0-10V
Short-circuit protection	Compatible
Overvoltage protection	Compatible
Overload protection	Compatible
Over Temperature	Compatible
Output power(MAX)	Compatible

4. STANDARDS

Safety compliance	PSE / CE / UL
Ingress protection rating	IP66
Environmental regulation	RoHS

5. WIRING DIAGRAM



5. ATTENTION

- For dimming, use an optional dimmer (CD 1500 PWM).
- Although this product is a dimming compatible driver, dimming is not possible when the LED module to be connected is not dimmable.
- For installation work, qualified persons should follow the laws of electrical equipment. (Fear of fire or electric shock)
- Always turn off the power supply before installation work (Fear of electric shock or failure)
- Do not cover with flammable materials such as cloth and paper (Fear of fever or fire)
- Do not install in places where corrosive gas such as acid or chlorine is generated, or where prone to rust with water and oil
- Please wire properly with the connection shown. (Fear of fire, electric shock or failure)
- Please make wiring connection based on electrical installation engineering
- Since the output of this product is a constant voltage output of 24 V, do not connect LED modules with different voltage specifications
- Connect with the power input turned off.
- We are not responsible for any damage caused by fire, earthquake, acts by a third party, other accidents,
- intentional or negligent of the user, misuse, or other abnormal conditions.