

1st April, 2015

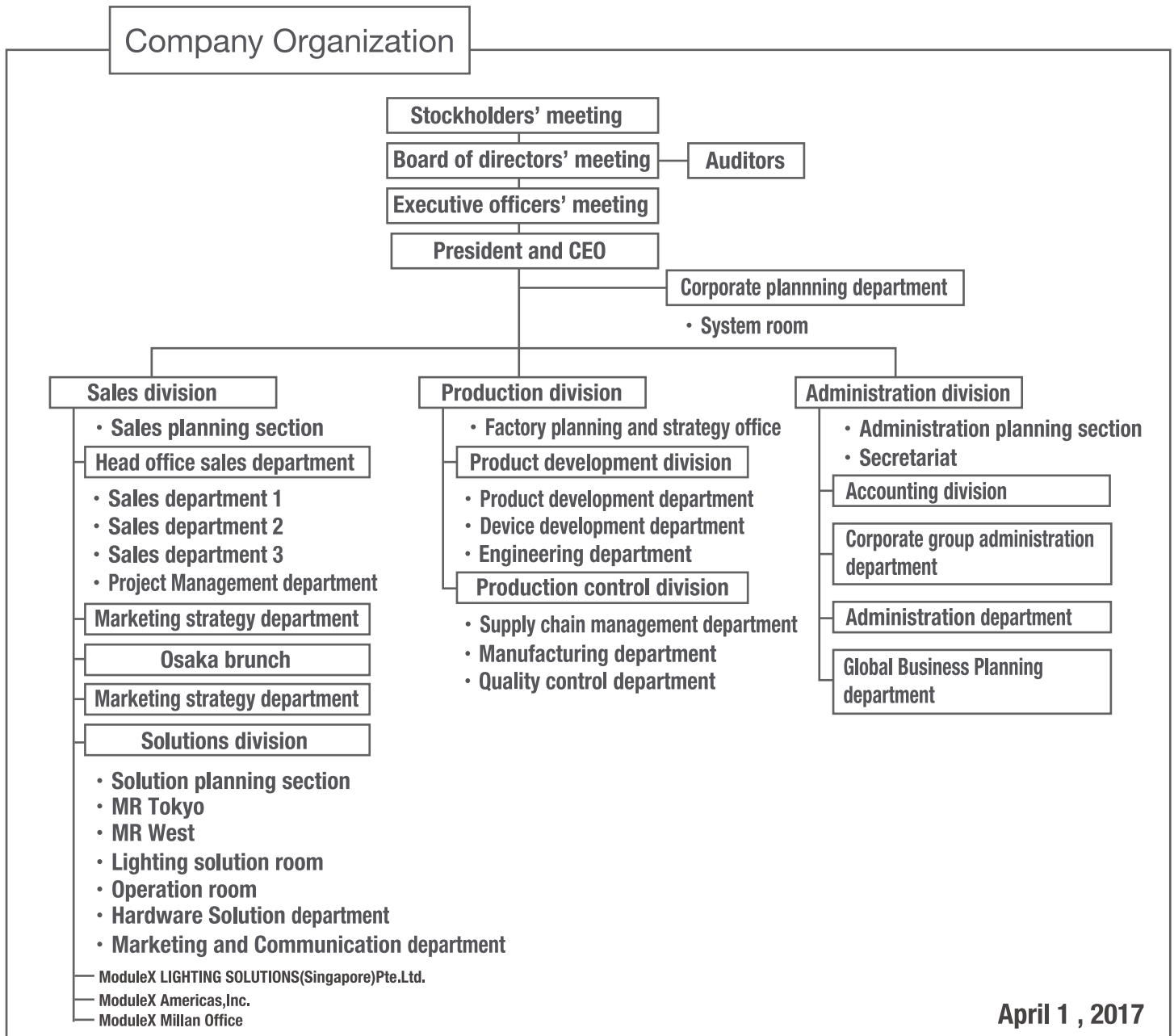
ModuleX Inc.

President and CEO  
Representative Managing Director

Goro Terumichi

## Announcement of the ModuleX Inc. New Structural Management System

We are pleased to announce that ModuleX Inc. has completed the preparation for the third medium-term management plan for the fiscal year of 2017 beyond by advancing the development of the new platform, the challenge of going into the new market, and the development of each branch. In order to execute the plan for sure, we started the new structural management system with the objective of elevating the value of "the integrated lighting solutions" in the market as well as operational reforms and maximization of the efficiency of the company activities and the working-style reforms.



## Directors

The regular Board of Directors Meeting on March 27th, 2017 resolved the following new list of directors which becomes operative on April 1st, 2017.

### 1. Board of Directors

◎ Board of Directors		
<b>Representative Managing Director</b>	<b>Goro Terumichi</b>	<b>Chairman and CEO</b>
<b>Director</b>	<b>Minoru Katsuhara</b>	<b>Production Division</b>
<b>Director</b>	<b>Akihiro Suga</b>	<b>Sales Division</b>
<b>Director</b>	<b>Hirokazu Aizawa</b>	<b>Administration Division</b>
<b>Director</b>	<b>Ryuichi Yamazaki</b>	<b>Senior Adviser</b>
<b>Auditor</b>	<b>Masayuki Haraguchi</b>	<b>(Attorney, C.P.A)</b>
<b>Auditor</b>	<b>Masayuki Maekawa</b>	<b>(C.P.A , L.T.A)</b>

### 2. Executive Officers

◎ Executive Officers	
<b>President</b>	<b>Goro Terumichi</b>
<b>Senior Executive Officer</b>	<b>Minoru Katsuhara</b>
[ Sales division ]	
<b>Senior Executive Officer</b>	<b>Akihiro Suga</b>
<b>Executive Officer</b>	<b>Norio Ishiwata</b>
<b>Executive Officer</b>	<b>Yoshinori Kurita</b>
<b>Executive Officer</b>	<b>Daisuke Sakai</b>
<b>Executive Officer</b>	<b>Kazushi Kawakami</b>
<b>Operational officer</b>	<b>Shinji Umino</b>
<b>Operational officer</b>	<b>Masahiko Kobayashi</b>
<b>Operational officer</b>	<b>Shinji Yamaki</b>
[ Production division ]	
<b>Executive Officer</b>	<b>Yasuhito Suzue</b>
<b>Executive Officer</b>	<b>Satoshi Eguchi</b>
[ Administration division ]	
<b>Executive Officer</b>	<b>Hirokazu Aizawa</b>
<b>Executive Officer</b>	<b>Takayasu Hatta</b>
<b>Executive Officer</b>	<b>Mariko Ai</b>